



# COVID-19 daily epidemiology update

Updated: May 5, 2021, 7 pm EST

Summary of COVID-19 cases across Canada and over time. Contains detailed data about the spread of the virus over time and in different regions of the country. Includes breakdowns by age and sex or gender. Provides an overview of hospitalizations and deaths, testing, variants of concern and exposures.

## Key updates as of May 5, 2021, 7 pm EST

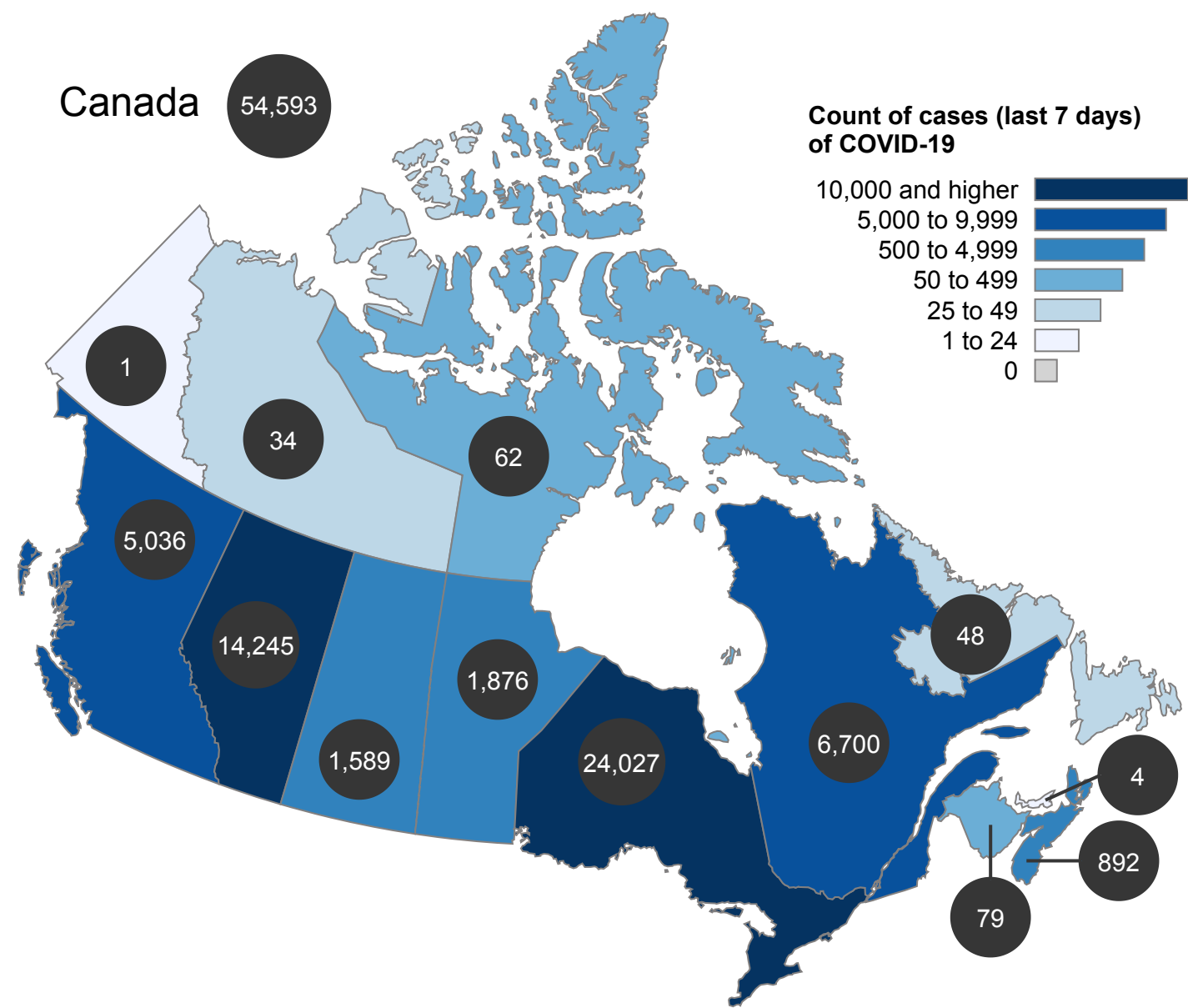
Cases today	Total cases	Active cases	Total resolved	Deaths today	Total deaths
<b>7,379</b>	<b>1,257,328</b>	<b>81,671</b>	<b>1,151,207</b>	<b>57</b>	<b>24,450</b>

Tests performed today	Total tests performed	Percent positive (total)	Tests performed per million population
<b>118,179</b>	<b>32,127,668</b>	<b>4.1%</b>	<b>845,348</b>

- We update these sections daily at 7:00 PM EST: Key updates, Current situation and National overview.
- We update these sections every Friday: Epidemic curve, Demographics, How people were exposed, and Severe illness and outcomes.
- Most cases (66.3%) and deaths (78.3%) were reported by Ontario and Quebec.
- Of the 13 jurisdictions reporting updates, no new cases were reported in 2 provinces or territories in the past 24 hours.
- Of the 13 jurisdictions reporting updates, no new deaths were reported in 7 provinces or territories in the past 24 hours.

# Current situation

Figure 1a. **Count** of **cases (last 7 days)** of COVID-19, by **province/territory** as of May 5, 2021



The count of cases (last 7 days) of COVID-19 in **Canada** was **54,593** as of May 5, 2021.

This information is based on data our provincial and territorial partners published on cases, deaths, and testing daily, and are current as of the day they are published. Today's numbers are current as of May 5, 2021, 7 pm EST. For the most up to date data for any province, territory or city, please visit their website. The number of cases or deaths reported on previous days may differ slightly from those on the provincial and territorial websites as these websites may update historic case and death counts as new information becomes available.

# Areas in Canada with cases of COVID-19 as of May 5, 2021

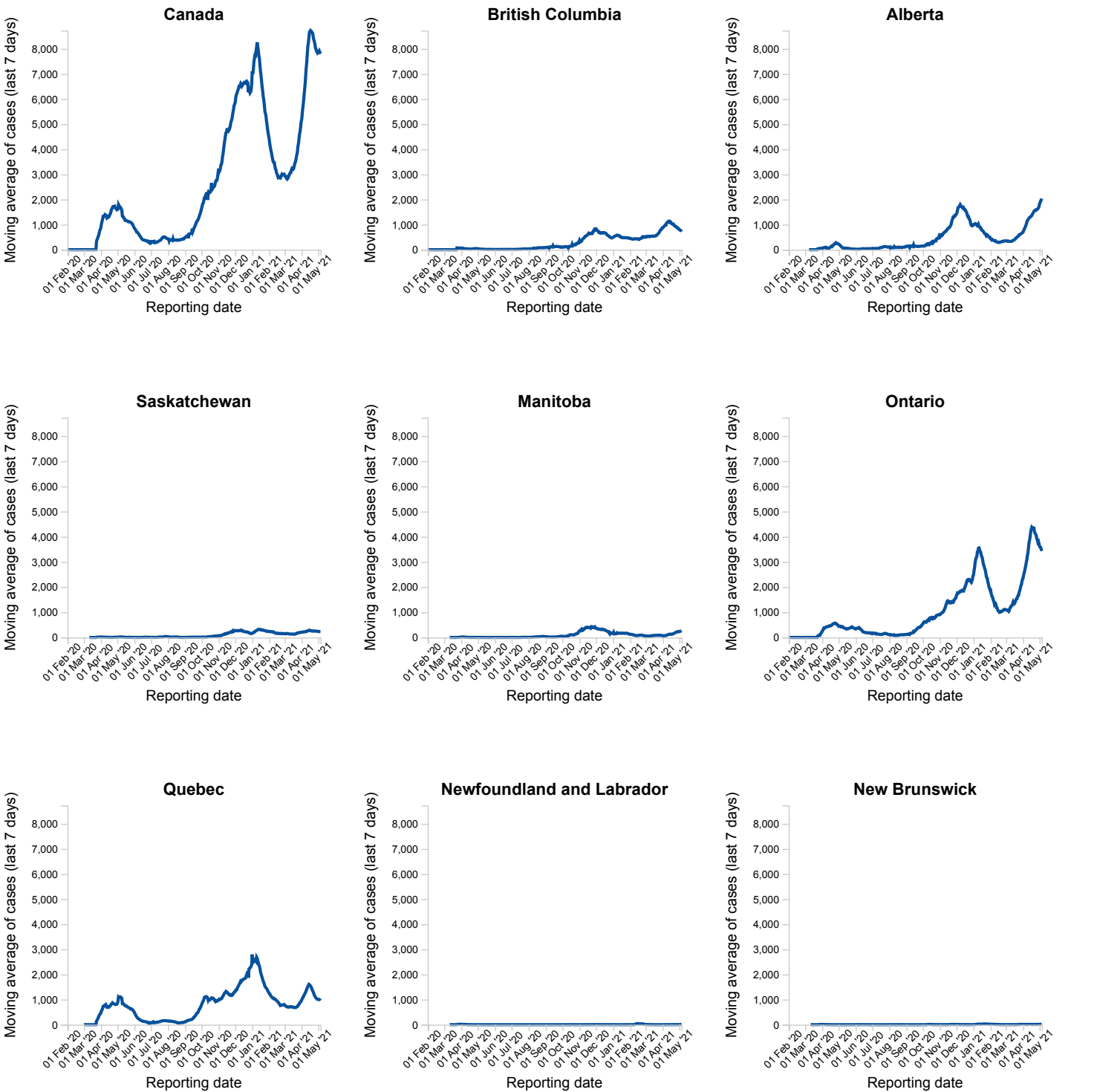
Location	Total cases		Cases last 7 days		Active cases		Resolved	Deaths		Deaths last 7 days		Total tests performed	
	Count	Rate*	Count	Rate*	Count	Rate*	Count	Count	Rate*	Count	Rate*	Count	Rate†
Canada	1,257,328	3,308	54,593	144	81,671	215	1,151,207	24,450	64	338	1	32,127,668	845,348
British Columbia	132,925	2,582	5,036	98	7,079	138	124,252	1,594	31	18	0	2,526,871	490,873
Alberta	200,924	4,544	14,245	322	24,156	546	174,666	2,102	48	29	1	4,212,709	952,697
Saskatchewan	42,203	3,581	1,589	135	2,250	191	39,452	501	43	15	1	781,228	662,799
Manitoba	40,085	2,906	1,876	136	2,780	202	36,323	982	71	11	1	695,895	504,541
Ontario	479,633	3,255	24,027	163	34,976	237	436,470	8,187	56	199	1	14,113,727	957,901
Quebec	354,390	4,133	6,700	78	8,895	104	334,531	10,964	128	61	1	8,422,822	982,302
Newfoundland and Labrador	1,114	213	48	9	62	12	1,046	6	1	0	0	245,764	470,719
New Brunswick	1,969	252	79	10	146	19	1,784	39	5	3	0	307,677	393,713
Nova Scotia	3,182	325	892	91	1,203	123	1,910	69	7	2	0	634,189	647,560
Prince Edward Island	183	115	4	3	7	4	176	0	0	0	0	145,944	914,293
Yukon	82	195	1	2	1	2	79	2	5	0	0	9,065	215,566
Northwest Territories	85	188	34	75	34	75	51	0	0	0	0	19,056	421,957
Nunavut	540	1,372	62	158	82	208	454	4	10	0	0	12,645	321,322

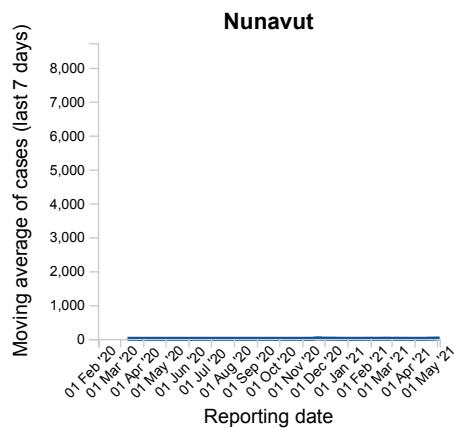
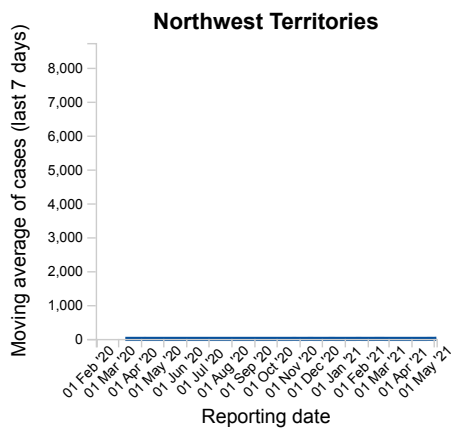
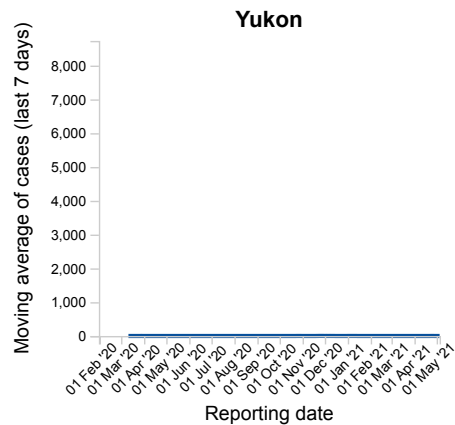
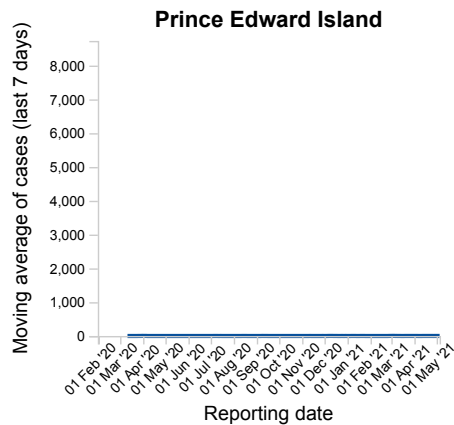
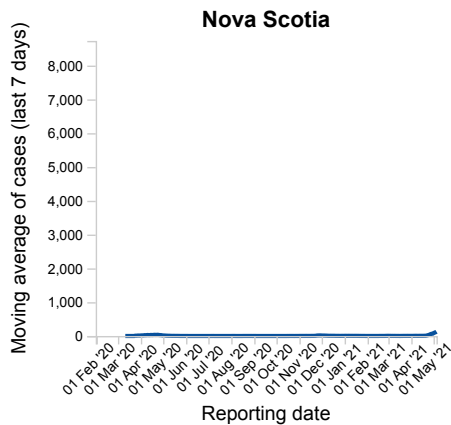
† Rate per 1,000,000 population

\* Rate per 100,000 population

Figure 1b. **Moving average** of **cases (last 7 days)** of COVID-19 in Canada as of May 5, 2021, 7 pm EST

The figures below show cases over time. The range of dates (January 31st, 2020 - present date) is the same for each figure. This allows you to compare the provinces and territories on the same timescale.





[Downloadable data \(in .csv format\).](#)

Note: Out of the total number of people tested, 76 were repatriated travellers, of which 13 were cases.

# National overview

There have been over **32,127,668** COVID-19 tests performed in Canada or **845,348 tests per 1 million people**. Of these, **4.1%** were positive. For information about testing trends, please see the [Detailed weekly epidemiological report \(PDF\)](#).

**Table 1. Daily\* change in the number of cases, deaths and tests performed, by province or territory, as of May 5, 2021, 7 pm EST**

Location	New cases	New deaths	Tests performed
<b>Canada</b>	<b>7,379</b>	<b>57</b>	<b>118,179</b>
British Columbia	572	0	8,192
Alberta	2,271	3	14,585
Saskatchewan	197	2	3,255
Manitoba	272	2	2,970
Ontario	2,941	44	33,740
Quebec	915	5	33,030
Newfoundland and Labrador	6	0	579
New Brunswick	11	1	1,425
Nova Scotia	175	0	19,186
Prince Edward Island	0	0	747
Yukon	0	0	11
Northwest Territories	14	0	335
Nunavut	5	0	124

\* The new cases, deaths and tests reflect the difference between a province or territory's current report and their last report. Some provinces and territories do not update daily.

N/A means that no daily update was provided by the province or territory.

# Variants of Concern (VOC) in Canada

All viruses, including COVID-19, change, or mutate, over time. Not all mutations are of concern. However, some changes result in variants of concern (VOC). A VOC has changes that are significant to public health.

For example, they might:

- spread more easily
- cause more severe illness
- require different treatments, or
- not respond the same to current vaccines

We update VOC (Variants of concern) information daily from Sunday to Thursday at 7:00 PM EST, using publicly reported information from the provinces and territories.

**Table 2. Cumulative number of cases involving variants of concern (VOC) publicly reported, as of May 5, 2021 7:00 PM EST**

Location	B.1.1.7 variant	B.1.351 variant	P.1 variant
<b>Canada</b>	<b>128,447</b>	<b>766</b>	<b>5,119</b>
British Columbia	4,039	76	2,063
Alberta	34,715	116	1,958
Saskatchewan	2,933	9	23
Manitoba	1,822	22	15
Ontario	80,511	317	1,001
Quebec	3,943	204	56
Newfoundland and Labrador	187	6	1
New Brunswick	180	4	0
Nova Scotia	73	12	1
Prince Edward Island	15	0	0
Yukon	2	0	1
Northwest Territories	6	0	0
Nunavut	21	0	0

Note: The table reports publicly available information from the provinces and territories. In case of discrepancies, the provincial or territorial data should be considered current and correct.

# Detailed case information

The tables and figures below reflect detailed case information provided to the Public Health Agency of Canada (PHAC) by health authorities in the provinces and territories. This data is updated every week. It may change as we get more information about cases.

Updated: April 30, 2021, 9 am EST

## Epidemic curve

As of April 30, 2021, 9 am EST, PHAC has received detailed case report data on 1,202,682 cases. Both exposure and symptom onset date were available for 1,069,103 (88.9%) cases <sup>1</sup>.

The shaded area on the far right of Figure 2 represents lag time. This is the period of time (1 to 2 weeks) before the latest cases are reported to PHAC. This delay is a result of the time required to seek health care, get tested and receive results. It also takes time for public health authorities to gather information on cases. We update this information as it becomes available.

**Figure 2. COVID-19 cases (n=1,202,671 <sup>1</sup>) in Canada by date of illness onset <sup>2</sup> as of April 30, 2021, 7 pm EST (total cases)**

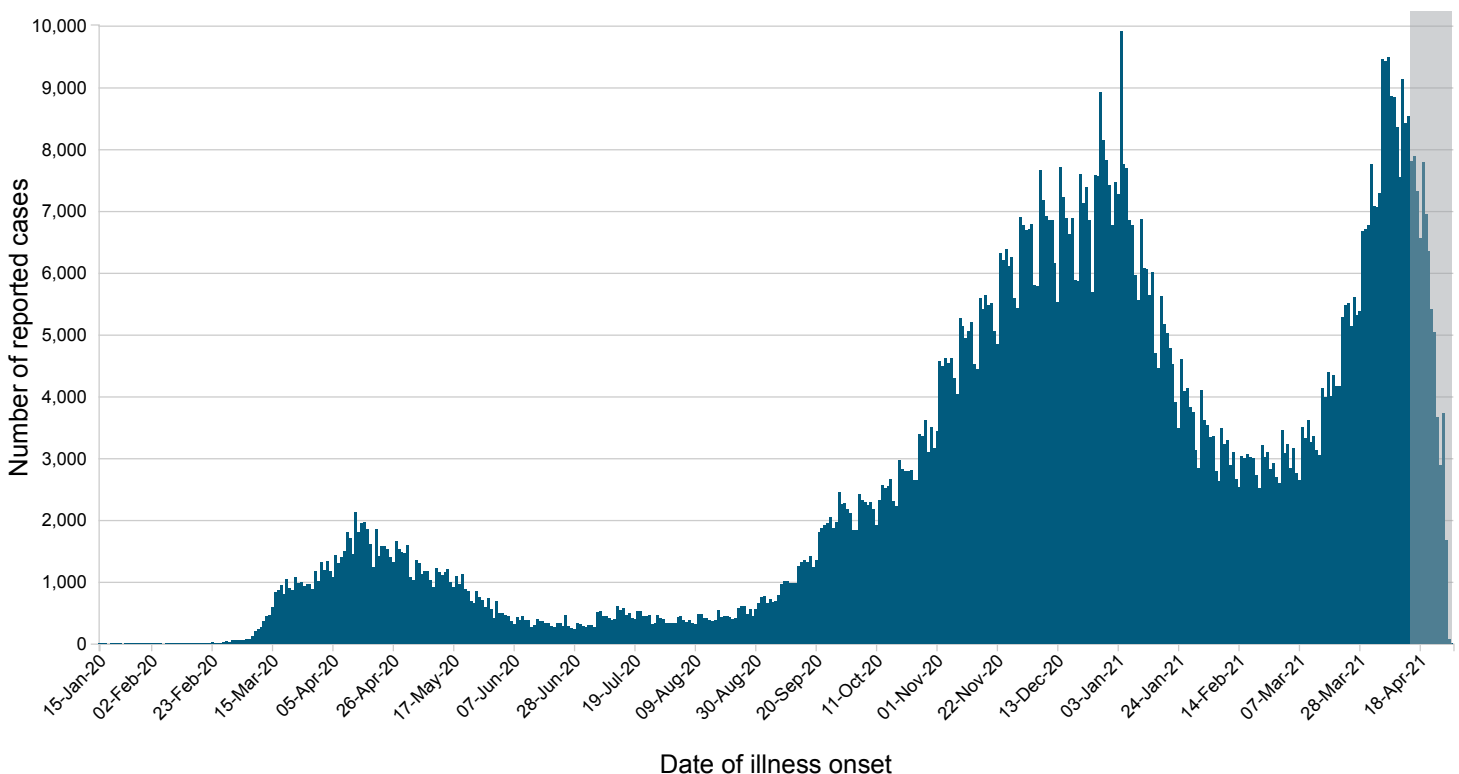




Figure 2. COVID-19 cases (n=1,069,103 <sup>1</sup>) in Canada by date of illness onset <sup>2</sup> as of April 30, 2021, 7 pm EST (by exposure)

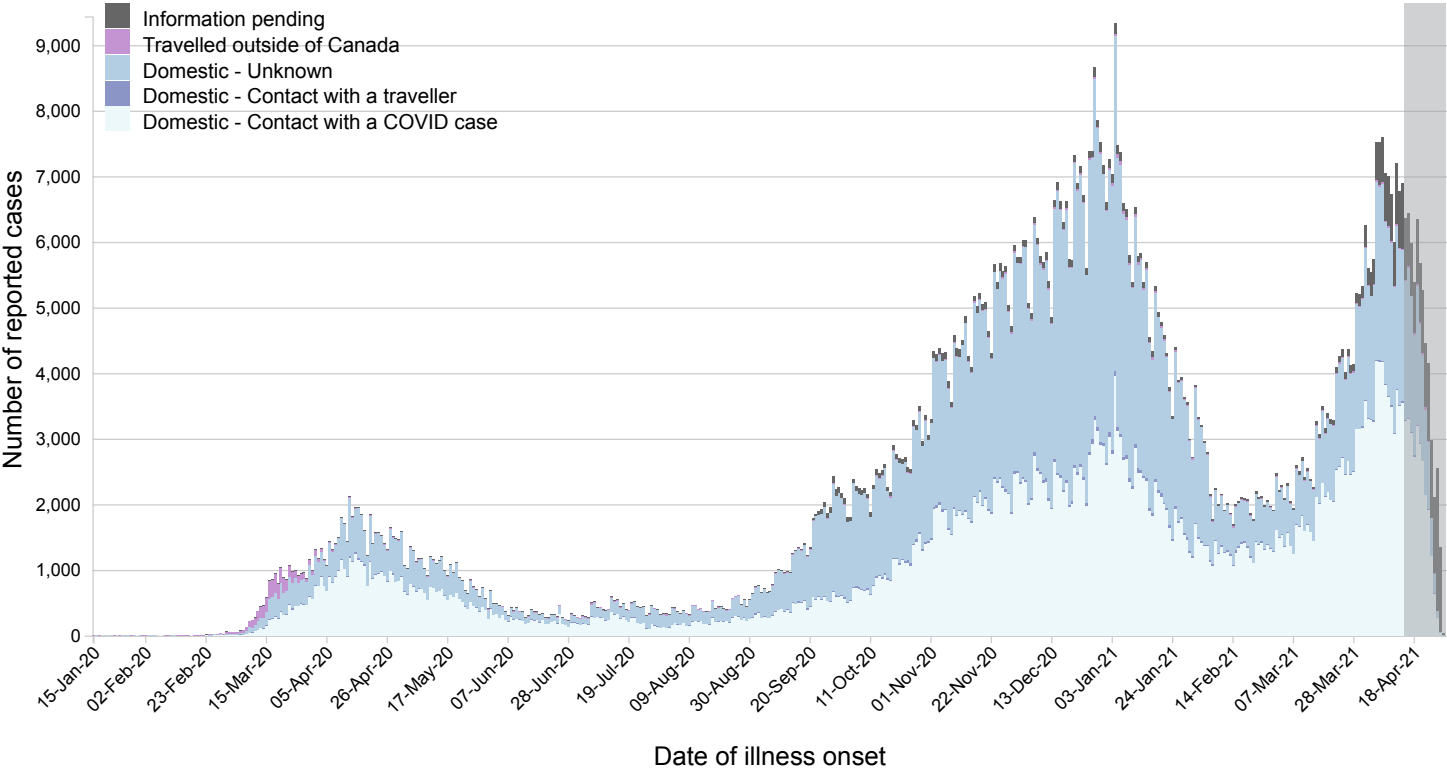
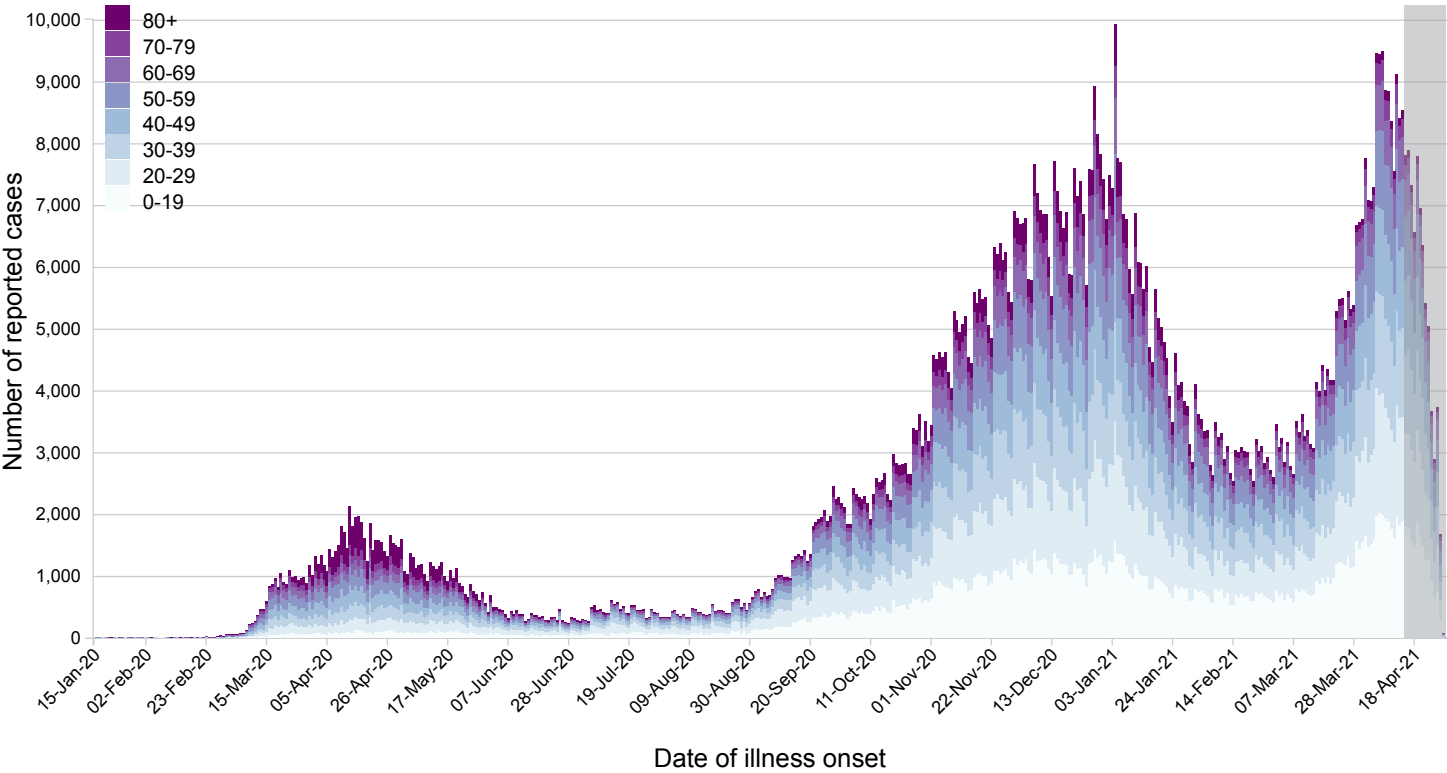
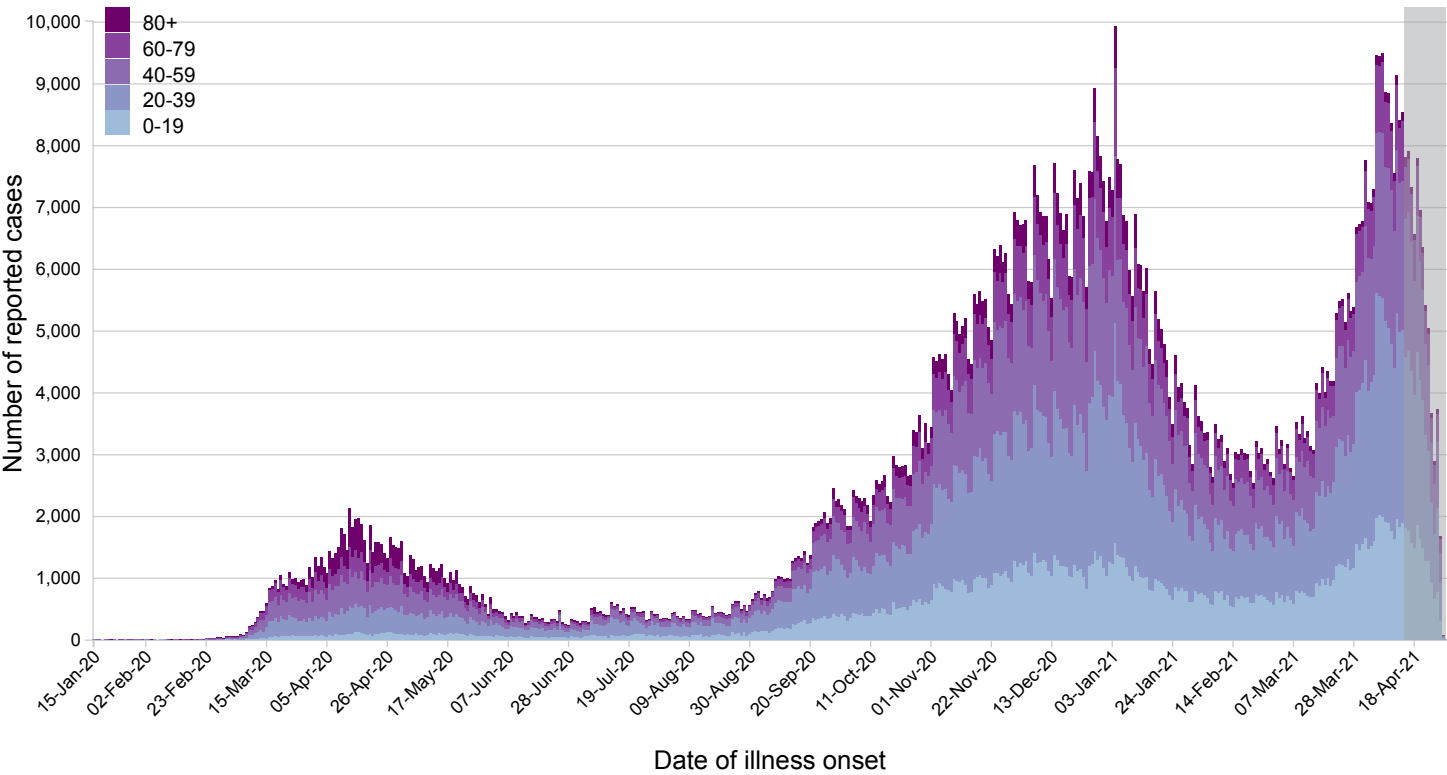


Figure 2. COVID-19 cases (n=1,202,337 <sup>1</sup>) in Canada by date of illness onset <sup>2</sup> as of April 30, 2021, 7 pm EST (by age - 10 year groups)



**Figure 2. COVID-19 cases (n=1,202,337 <sup>1</sup>) in Canada by date of illness onset <sup>2</sup> as of April 30, 2021, 7 pm EST (by age - 20 year groups)**



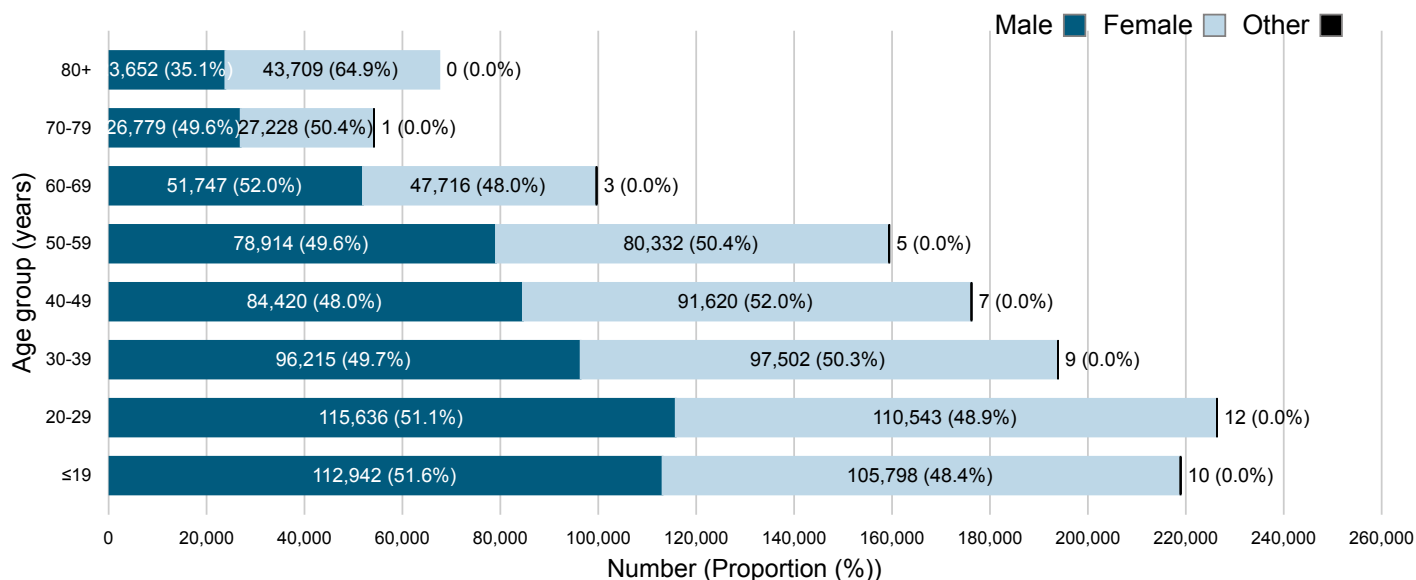
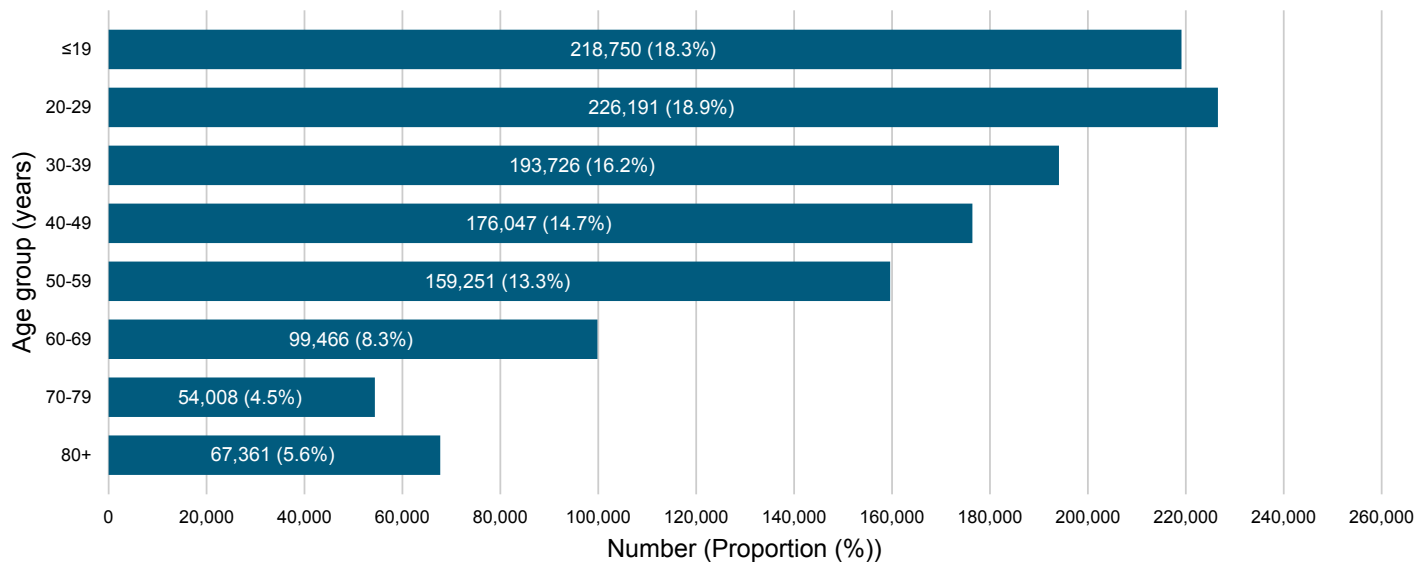
This figure may underestimate the total number of cases among returning travelers. Exposure history is not available for all cases and jurisdictions have not all consistently reported exposure history to PHAC throughout the pandemic.

# Demographics

We have detailed case report data from 1,202,682 cases. We know the age of patients in 99.45% of cases, and both age and gender in 99.34% of cases.

Of the cases reported in Canada so far, about half (50.6%) were female. About one-fifth (18.5%) were 60 years old and over (Figure 3).

Figure 3.  distribution of COVID-19 cases (n=1,196,037 <sup>1</sup>) in Canada as of April 30, 2021, 7 pm EST <sup>4</sup>



## Age by gender <sup>4</sup> distribution of COVID-19 cases (n=1,196,037 <sup>1</sup>) in Canada, April 30, 2021, 7 pm EST

Age group (years)	Number of cases with case reports (percentage)	Number of male cases (percentage)	Number of female cases (percentage)	Number of other cases (percentage)
≤19	218,750 (18.3%)	112,942 (19.1%)	105,798 (17.5%)	10 (21.3%)
20-29	226,191 (18.9%)	115,636 (19.6%)	110,543 (18.3%)	12 (25.5%)
30-39	193,726 (16.2%)	96,215 (16.3%)	97,502 (16.1%)	9 (19.1%)
40-49	176,047 (14.7%)	84,420 (14.3%)	91,620 (15.2%)	7 (14.9%)
50-59	159,251 (13.3%)	78,914 (13.4%)	80,332 (13.3%)	5 (10.6%)
60-69	99,466 (8.3%)	51,747 (8.8%)	47,716 (7.9%)	3 (6.4%)
70-79	54,008 (4.5%)	26,779 (4.5%)	27,228 (4.5%)	1 (2.1%)
80+	67,361 (5.6%)	23,652 (4.0%)	43,709 (7.2%)	0 (0.0%)
Total	1,194,800 (100%)	590,305 (100%)	604,448 (100%)	47 (100%)

## How people were exposed <sup>3</sup>

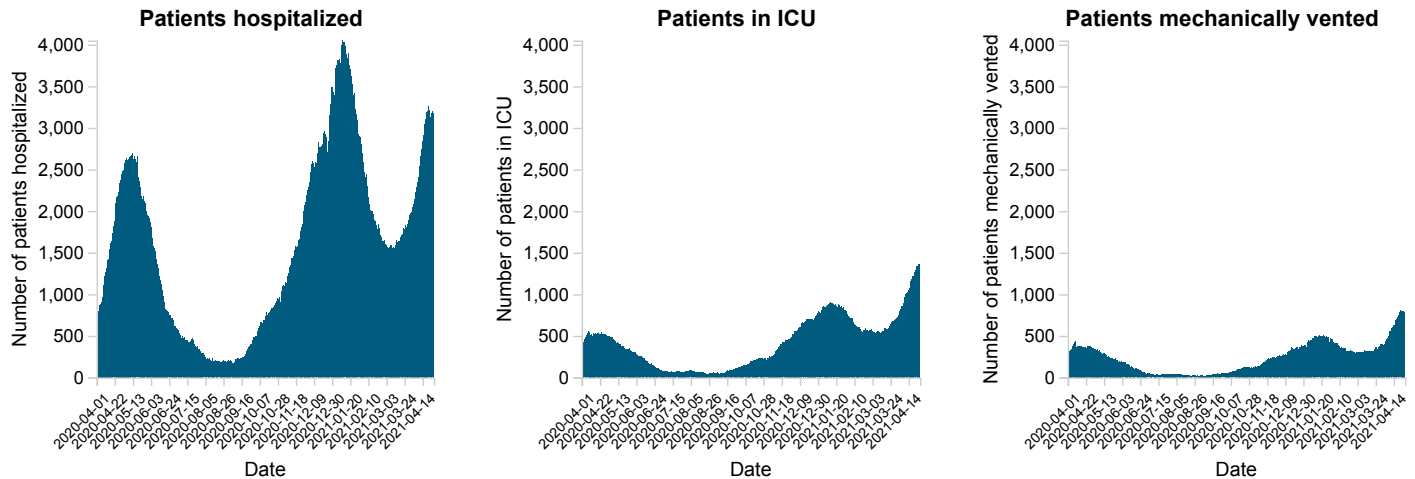
In Canada ▼, detailed case report data were provided for 1,202,682 cases. We have exposure history for 1,064,978 (88.6%) cases. The probable exposure setting of these cases <sup>1</sup> are:

- any exposure that occurred in Canada: **1,018,686 (95.7%)**, including
  - from contact with a known COVID case: **498,062 (46.8%)**
  - from contact with a traveller: **7,257 (0.7%)**
  - from an unknown source: **513,367 (48.2%)**
- currently unknown (information pending): **37,450 (3.5%)**
- travelled outside of Canada: **8,842 (0.8%)**

# Severe illness and outcomes

## Hospital use

Figure 4. Daily number of hospital beds and ICU beds occupied by COVID-19 patients as of April 26, 2021



Between April 19, 2021 and April 26, 2021:

- the number of **hospital beds** occupied by COVID-19 patients **decreased** from **3,205** to **3,182** beds.
- the number of **ICU beds** occupied by COVID-19 patients **increased** from **1,215** to **1,365** beds.
- the number of **COVID-19 patients who were mechanically vented** increased from **747** to **788**.

## Hospitalizations and deaths to date

We have detailed case report data on 1,202,682 cases, and hospitalization status for 830,342 (69.0%) of them:

- **61,938 cases (7.5%)** were hospitalized, of whom:
  - **11,335 (18.3%)** were admitted to the ICU
  - **1,829 (3.0%)** needed mechanical ventilation

The provinces and territories provided detailed case report forms for **24,076** deaths related to COVID-19.

Figure 5a. Age and gender <sup>4</sup> distribution of COVID-19 cases hospitalized in Canada as of April 30, 2021, 7 pm EST (n=50,529 <sup>1</sup>)

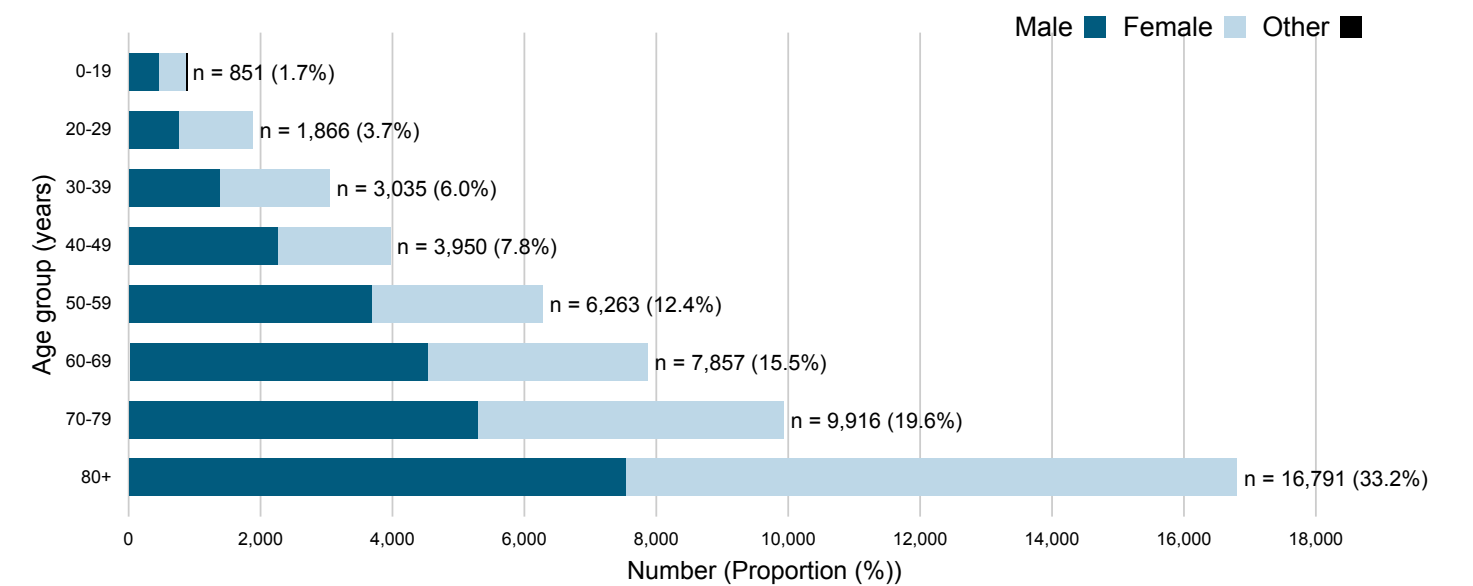


Figure 5b. Age and gender <sup>4</sup> distribution of COVID-19 cases admitted to ICU in Canada as of April 30, 2021, 7 pm EST (n=11,314 <sup>1</sup>)

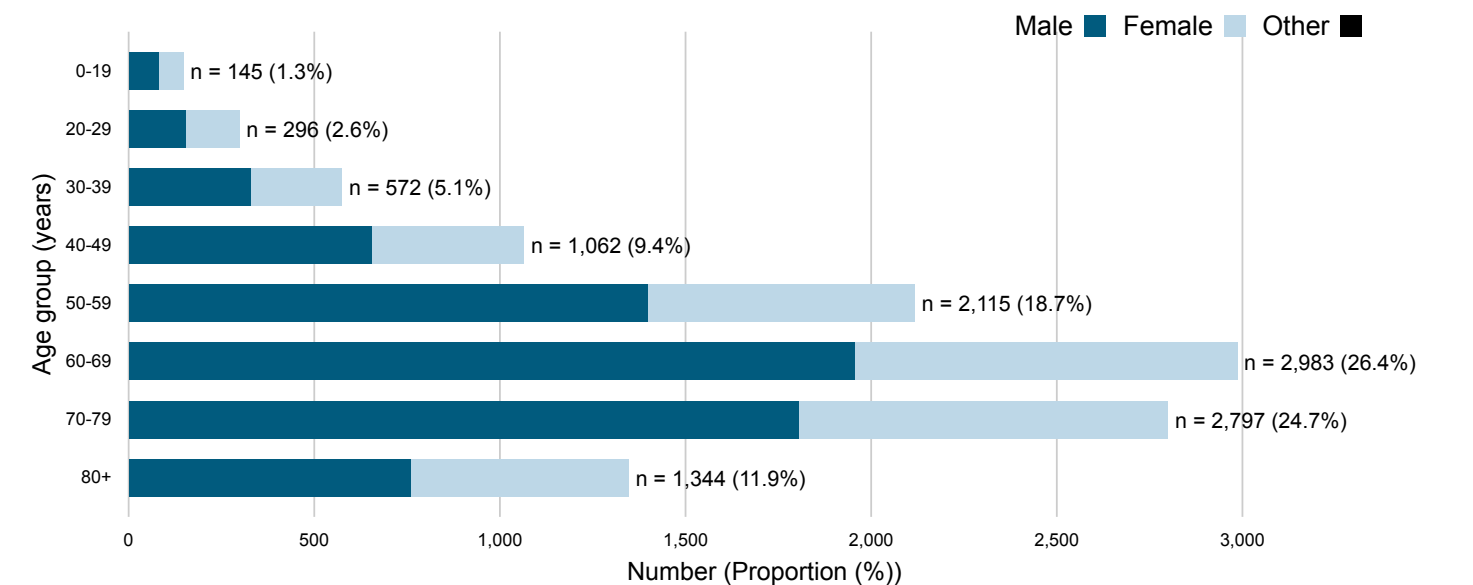
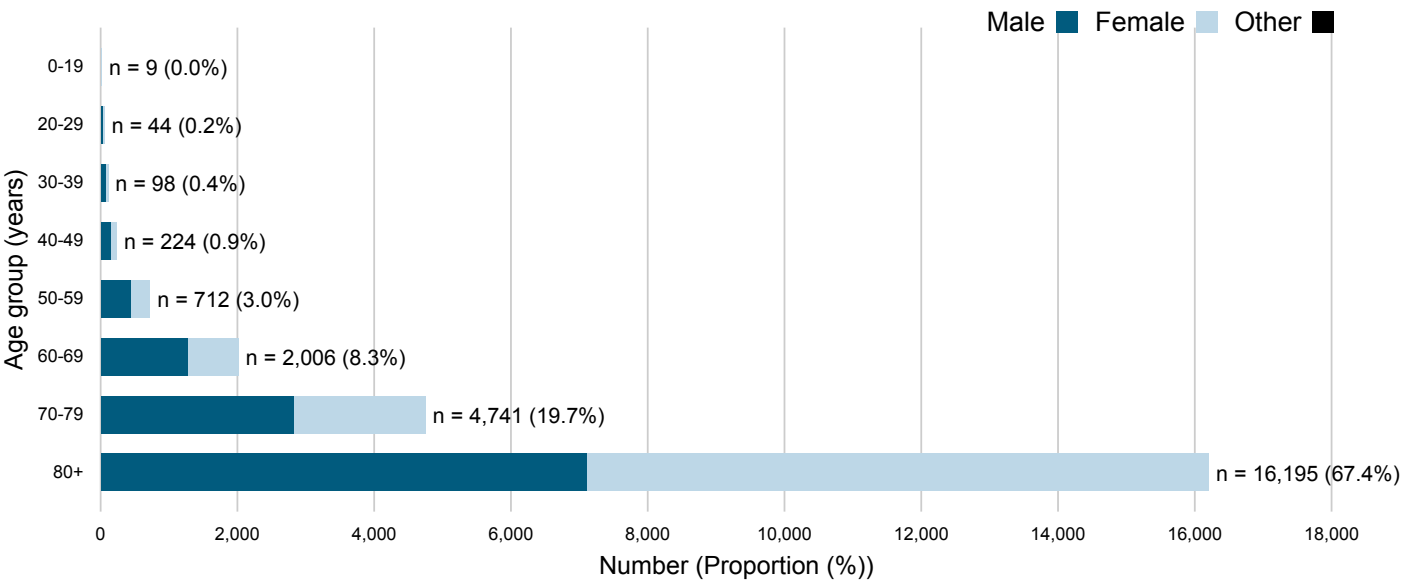


Figure 5c. Age and gender<sup>4</sup> distribution of COVID-19 cases deceased in Canada as of April 30, 2021, 7 pm EST (n=24,029<sup>1</sup>)



Data note: Figure 5 includes COVID-19 cases hospitalized, admitted to ICU, and deceased for which age and gender information were available. Therefore, some COVID-19 hospitalizations, ICU admissions, and deaths may not be included in Figure 5.

**Age and gender <sup>4</sup> distribution of COVID-19 cases hospitalized in Canada as of April 30, 2021, 7 pm EST (n=50,529 <sup>1</sup>)**

<b>Age group (years)</b>	<b>Number of cases with case reports (percentage)</b>	<b>Number of male cases (percentage)</b>	<b>Number of female cases (percentage)</b>	<b>Number of other cases (percentage)</b>
0-19	851 (1.7%)	452 (0.9%)	398 (0.8%)	1 (0.0%)
20-29	1,866 (3.7%)	750 (1.5%)	1,116 (2.2%)	0 (0.0%)
30-39	3,035 (6.0%)	1,371 (2.7%)	1,664 (3.3%)	0 (0.0%)
40-49	3,950 (7.8%)	2,250 (4.5%)	1,700 (3.4%)	0 (0.0%)
50-59	6,263 (12.4%)	3,682 (7.3%)	2,581 (5.1%)	0 (0.0%)
60-69	7,857 (15.5%)	4,532 (9.0%)	3,325 (6.6%)	0 (0.0%)
70-79	9,916 (19.6%)	5,285 (10.5%)	4,631 (9.2%)	0 (0.0%)
80+	16,791 (33.2%)	7,532 (14.9%)	9,259 (18.3%)	0 (0.0%)

**Age and gender <sup>4</sup> distribution of COVID-19 cases admitted to ICU in Canada as of April 30, 2021, 7 pm EST (n=11,314 <sup>1</sup>)**

<b>Age group (years)</b>	<b>Number of cases with case reports (percentage)</b>	<b>Number of male cases (percentage)</b>	<b>Number of female cases (percentage)</b>	<b>Number of other cases (percentage)</b>
0-19	145 (1.3%)	79 (0.7%)	66 (0.6%)	0 (0.0%)
20-29	296 (2.6%)	153 (1.4%)	143 (1.3%)	0 (0.0%)
30-39	572 (5.1%)	329 (2.9%)	243 (2.1%)	0 (0.0%)
40-49	1,062 (9.4%)	654 (5.8%)	408 (3.6%)	0 (0.0%)
50-59	2,115 (18.7%)	1,397 (12.3%)	718 (6.3%)	0 (0.0%)
60-69	2,983 (26.4%)	1,954 (17.3%)	1,029 (9.1%)	0 (0.0%)
70-79	2,797 (24.7%)	1,805 (16.0%)	992 (8.8%)	0 (0.0%)
80+	1,344 (11.9%)	757 (6.7%)	587 (5.2%)	0 (0.0%)



**Age and gender <sup>4</sup> distribution of COVID-19 cases deceased in Canada as of April 30, 2021, 7 pm EST (n=24,029 <sup>1</sup>)**

<b>Age group (years)</b>	<b>Number of cases with case reports (percentage)</b>	<b>Number of male cases (percentage)</b>	<b>Number of female cases (percentage)</b>	<b>Number of other cases (percentage)</b>
0-19	9 (0.0%)	4 (0.0%)	5 (0.0%)	0 (0.0%)
20-29	44 (0.2%)	24 (0.0%)	20 (0.0%)	0 (0.0%)
30-39	98 (0.4%)	63 (0.1%)	35 (0.0%)	0 (0.0%)
40-49	224 (0.9%)	138 (0.2%)	86 (0.1%)	0 (0.0%)
50-59	712 (3.0%)	436 (0.6%)	276 (0.3%)	0 (0.0%)
60-69	2,006 (8.3%)	1,261 (2.4%)	745 (1.6%)	0 (0.0%)
70-79	4,741 (19.7%)	2,817 (10.5%)	1,924 (7.1%)	0 (0.0%)
80+	16,195 (67.4%)	7,105 (30.0%)	9,090 (20.8%)	0 (N/A)

# Provincial, territorial and international reporting

For more information, please refer to provincial or territorial COVID-19 webpages:

- [British Columbia](#)
- [Alberta](#)
- [Saskatchewan](#)
- [Manitoba](#)
- [Ontario](#)
- [Quebec](#)
- [Newfoundland and Labrador](#)
- [New Brunswick](#)
- [Nova Scotia](#)
- [Prince Edward Island](#)
- [Yukon](#)
- [Northwest Territories](#)
- [Nunavut](#)
- [World Health Organization](#)
- [Centers for Disease Control and Prevention](#)
- [European Centre for Disease Control and Prevention](#)

- 
- 1 This figure is based on cases for which a case report form was received by the Public Health Agency of Canada from provincial or territorial partners.
  - 2 The shaded area represents a period of time (lag time) where it is expected that cases have occurred but have not yet been reported nationally. The earliest of the following dates were used as an estimate: Onset date, Specimen Collection Date, Laboratory Testing Date, Date Reported to Province or Territory, or Date Reported to PHAC.
  - 3 Exposure information may not be available for all cases. Some jurisdictions haven't consistently reported to PHAC how people were exposed throughout the pandemic. As a result, this may underestimate the total number of cases by different exposures, especially among returning travelers.
  - 4 Where available, gender data was used; when gender data was unavailable, sex data was used. Reliable data on gender diverse respondents are unavailable due to small counts.
- 

**Date modified:**

2021-05-05

