



# Coronavirus Disease 2019 (COVID-19)

## Daily Situation Report by the Robert Koch Institute

### 16/02/2022- CURRENT STATUS FOR GERMANY

Confirmed cases		7-day incidence (7-di)		DIVI-Intensive care registry as of 15/02/2022 12:15 AM	Vaccination monitoring as of 16/02/2022
Total <sup>1</sup>	active cases <sup>2</sup>	Total population	No. of districts with 7-di > 50/100,000 pop.	Change to previous day for no. of cases currently in ICU	No. of vaccinations reported in last 24h
+219,972 (12,800,315)	+55,800 [ca. 3,526,800]	1,401.0 cases/100,000 pop.	±0 [411/411]	+21 [2,494]	1st vaccination: +13,557 2nd vaccination: +42,968 Booster vaccination: +122,412
Hospitalised <sup>1</sup>	Recovered <sup>3</sup>	Hospitalised (all age groups)	No. of districts with 7-di > 500/100,000 pop.	% of COVID-19 occupancy in total number of operable beds <sup>4</sup>	Total no. of people fully vaccinated against COVID-19 <sup>5, 6, 7</sup>
+2,026 (427,786)	+163,900 (ca. 9,153,100)	6.04 cases/100,000 pop.	-1 [409/411]	11.1 %	N1: 63,320,634 N2: 62,316,945 N3: 46,345,147
Deaths <sup>1</sup>		Hospitalised aged 60 years +	No. of districts with 7-di > 1000/100,000 pop	No. of new cases in ICU compared to the previous day	Share of population fully vaccinated against COVID-19
+247 (120,467)		11.64 cases/100,000 pop.	-1 [341/411]	+279	N1: 76.1 % <sup>5</sup> N2: 74.9 % <sup>6</sup> N3: 55.7 % <sup>7</sup>

Numbers in ( ) brackets show cumulative values, numbers in [ ] brackets show current values. Footnotes can be found in the Annex.

COVID-19 cases are notified to the local public health authorities in the respective districts, in accordance with the German Protection against Infection Act (IfSG). The data are further transmitted through the respective federal state health authority to the Robert Koch Institute (RKI). This situation report presents the uniformly recorded nationwide data on laboratory-confirmed COVID-19 cases transmitted to RKI.

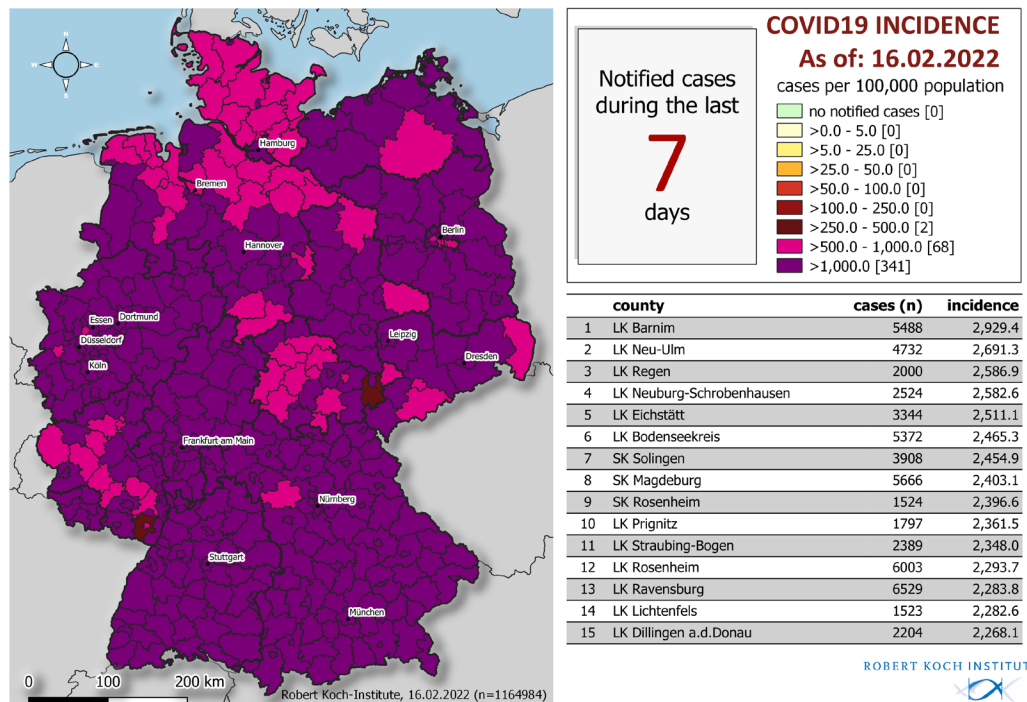
– Changes since the last report are marked **blue** in the text –

### Summary (as of 16/02/2022, 10:00 AM)

- Yesterday, **219,972** new laboratory-confirmed COVID-19 cases as well as **247** new deaths associated with COVID-19 were transmitted to the RKI in Germany. The national 7-day incidence is **1,401.0** cases per 100,000 population. The 7-day incidence in federal states lies between **1,767.8** cases per 100,000 population in **Brandenburg** and **756.1** per 100,000 population in **Schleswig-Holstein**.
- Overall, **+2,026** new hospitalisations with COVID-19 were reported, the 7-day incidence of hospitalised cases is **6.04** per 100,000 population.
- On **15/02/2022** (12:15 AM), **2,494** COVID-19 patients were in intensive care units (ICU), **+21** cases compared to the day before. The COVID-19 adult occupancy in percent of all operational adult intensive care beds is **11.1 %**.<sup>4</sup>
- Since 26/12/2020, **168,378,282** vaccine doses have been administered in Germany. Overall, **76.1 %** of the population in Germany have been vaccinated at least once.<sup>5</sup> **74.9 %** have received a complete course of vaccination against COVID-19.<sup>6</sup> **55.7 %** have received a booster vaccination.<sup>7</sup>

## Epidemiological Situation in Germany (as of 16/02/2022, 0:00 AM)

Since January 2020, a total of **12,800,315 (+219,972)** laboratory-confirmed cases of COVID-19 have been reported to and validated by the RKI (Table 1). The geographical distribution of cases of the last 7 days is shown in Figure 1. Please see the COVID-19 dashboard (<https://corona.rki.de/>) for information on the number of COVID-19 cases by county (local health authority).



**Figure 1: Number and cumulative incidence (per 100,000 population) of reported COVID-19 cases in Germany by county and federal state (n=1,164,984, 16/02/2022, 12:00 AM).** Cases are usually reported according to the district from which they were transmitted. This usually corresponds to the place of residence. Place of residence and probable place of infection do not have to coincide.

**Table 1: Number and cumulative incidence (per 100,000 population) of laboratory-confirmed COVID-19 cases, hospitalizations and deaths for each federal state electronically reported to RKI, Germany (16/02/2022, 12:00 AM).** The number of new cases includes cases newly notified to the local public health authority, but also on prior days.

Federal State	Cumulative cases			Last 7 days			Cumulative deaths	
	Number of cases	Number of new cases	Cases/ 100,000 pop.	Cases	Cases/ 100,000 pop.	Hospitalisations/ 100,000 pop.	Number of deaths	Deaths/ 100,000 pop.
Baden-Wuerttemberg	1,784,165	31,958	16,069	180,363	1,624.4	7.23	13,955	126
Bavaria	2,348,264	41,152	17,871	231,902	1,764.8	5.27	20,934	159
Berlin	663,425	11,527	18,106	40,964	1,118.0	3.79	4,173	114
Brandenburg	446,606	9,009	17,645	44,744	1,767.8	4.74	5,095	201
Bremen	105,821	1,073	15,559	6,834	1,004.8	3.53	667	98
Hamburg	320,329	3,975	17,292	18,767	1,013.1	2.65	2,221	120
Hesse	946,837	15,153	15,046	87,862	1,396.2	7.66	9,035	144
Mecklenburg-Western Pomerania	197,740	5,342	12,276	22,755	1,412.7	13.66	1,709	106
Lower Saxony	876,119	16,375	10,947	90,832	1,134.9	4.46	7,278	91
North Rhine-Westphalia	2,657,280	48,208	14,824	257,616	1,437.1	6.43	21,652	121
Rhineland-Palatinate	497,970	9,642	12,150	43,457	1,060.3	5.32	4,887	119
Saarland	136,429	2,725	13,865	14,663	1,490.2	4.98	1,365	139
Saxony	837,254	9,433	20,638	46,460	1,145.2	5.62	14,237	351
Saxony-Anhalt	340,691	5,025	15,623	34,263	1,571.2	6.83	4,684	215
Schleswig-Holstein	277,258	5,055	9,525	22,008	756.1	5.57	2,058	71
Thuringia	364,127	4,320	17,174	21,494	1,013.8	8.21	6,517	307
<b>Total</b>	<b>12,800,315</b>	<b>219,972</b>	<b>15,393</b>	<b>1,164,984</b>	<b>1,401.0</b>	<b>6.04</b>	<b>120,467</b>	<b>145</b>

Quality checks and data cleaning by the local health departments and federal state health authorities can lead to corrections to cases previously transmitted (e. g. detection of duplicate reports). This can occasionally lead to negative values for the number of new cases.

Figure 2 shows the course of the COVID-19 cases per 100,000 population transmitted to the RKI on the last 7 days in each of the federal states and in all of Germany. The values for the 7-day incidence in the federal states range from 1,767.8 per 100,000 population in Brandenburg to 756.1 per 100,000 population in Schleswig-Holstein.

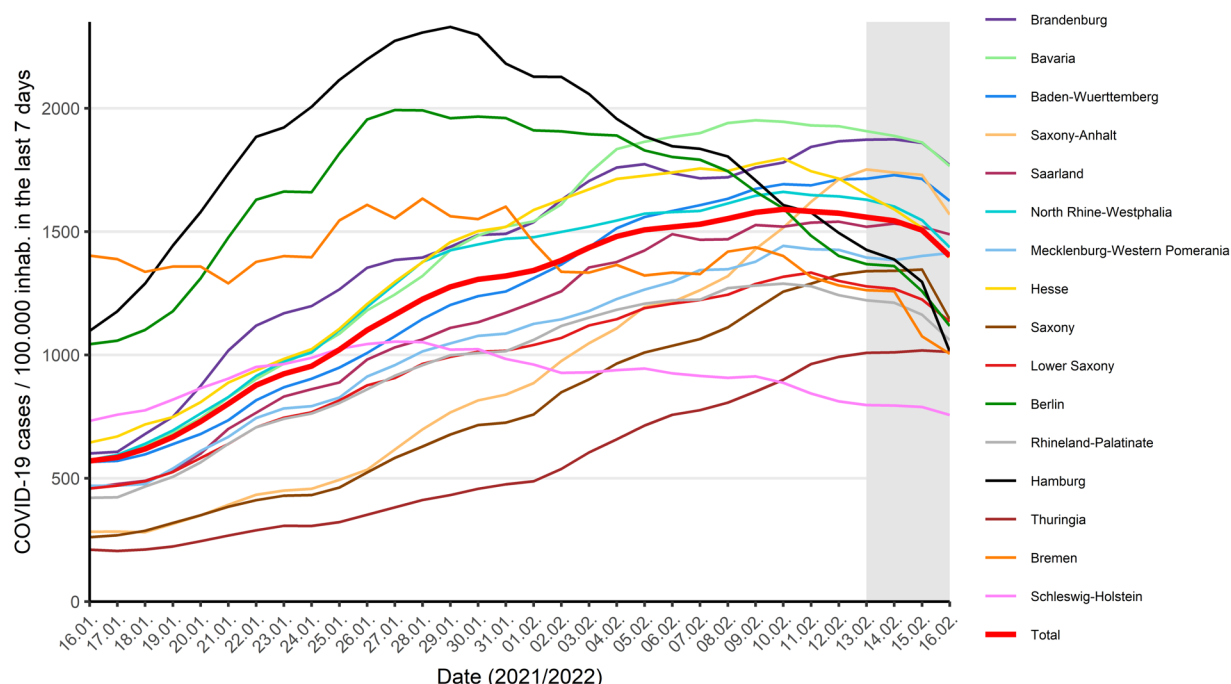


Figure 2: COVID-19 cases/100,000 inhabitants during 7 days in Germany by federal state and reporting date in the health offices (16/02/2022, 0:00 AM). The grey area delineates a range of dates with yet incomplete data, where changes in incidence are likely to occur.

## Estimation of the reproduction number (R), taking into account the reporting delay (Nowcasting)

Figure 3 shows the course of estimated 7-day R-value.

7-day R-value
0.87
(95%-prediction interval: 0.83 – 0.91)

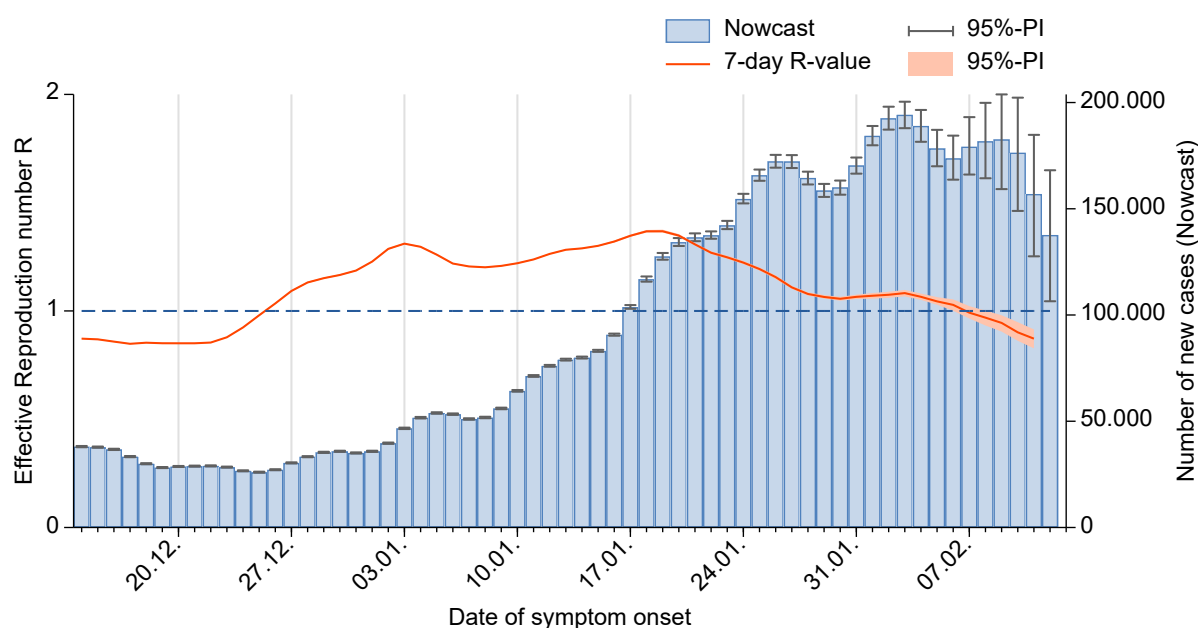


Figure 3: Estimated 7-day R-value (in orange) over the last 60 days, against the background of estimated number of COVID-19 cases according to illness onset (as of 16/02/2022, 12 AM, taking into account cases up to 12/02/2022).

The R-value is statistically significantly below 1, indicating a falling trend in case numbers.

Sample calculations as well as an excel sheet presenting the daily updated R-value can be retrieved under [www.rki.de/covid-19-nowcasting](http://www.rki.de/covid-19-nowcasting). A detailed description of the methodology is available at [https://www.rki.de/DE/Content/Infekt/EpidBull/Archiv/2020/17/Art\\_02.html](https://www.rki.de/DE/Content/Infekt/EpidBull/Archiv/2020/17/Art_02.html) (Epid. Bull. 17 | 2020 from 23/04/2020).

## **Annex:**

### **Notes on data collection and evaluation**

The data presented in this situation report represent a temporal snapshot. Information on individual cases can be obtained and added by the health authorities in the course of the disease. It is not possible to obtain complete data for all variables.

If necessary, the local public health authorities collect additional information, evaluate reported cases and initiate the necessary infection control measures. In accordance with the Infection Protection Act, the data are transmitted electronically by the local public health authorities to the federal state health authority and from there to the RKI on the next working day at the latest. The data is updated at the RKI daily at 0:00 AM.

Data entry and data transmission can lead to a time lag from the time the case is reported to the local public health authorities until publication by the RKI, so case numbers may deviate from those from other sources.

For the calculation of the incidences, the data of the population statistics of the Federal Statistical Office from 31.12.2020 are used. The calculation of the 7-day incidence is based on the reporting date, i.e. the date on which the local public health authorities became aware of the case and recorded it electronically. For the 7-day incidence, the cases reported on the last 7 days are counted.

On the other hand, the number of cases since the previous day, as shown in the situation report and dashboard, is tied to the date when the case is first published in the RKI's reporting. Thus, due to transmission delays, it may occur that cases with a reporting date more than 7 days ago are still included in the situation report. At the same time, the number of cases since the previous day also may contain cases that were subsequently deleted in data quality checks. Thus, the 7-day incidence cannot be readily calculated from these single-day incidences.

### **Notes**

- 1 The number of cases since the previous day refers to the date of receipt at the RKI; due to the delay in transmission, cases from previous days may be included.
- 2 The number of active cases results from the number of transmitted cases minus the deaths and the estimated number of recovered cases.
- 3 The algorithm for estimating the number of people who have recovered assumes an average duration of illness from onset or hospitalization date on. The true length of symptomatic illness and/or sequelae are usually not available in the reporting system.
- 4 Proportion of COVID-19 occupancy by adults out of all available adult intensive care beds.
- 5 The total number of persons vaccinated at least once results from the number of reports coded as first vaccination in the transmitted vaccination data.
- 6 According to specifications for vaccination data transmission, every second vaccination or first vaccination after recovery is to be transmitted with the code as a complete vaccination. A vaccination with the Janssen vaccine is coded and transmitted as a first vaccination, but is also counted as completed vaccination series.
- 7 The total number of persons with booster vaccination results from the number of reports coded as booster vaccination in the transmitted vaccination data.