



Coronavirus Disease 2019 (COVID-19)

Daily Situation Report by the Robert Koch Institute

03/03/2022- CURRENT STATUS FOR GERMANY

Confirmed cases		7-day incidence (7-di)		DIVI-Intensive care registry as of 02/03/2022 12:15 AM	Vaccination monitoring as of 03/03/2022
Total ¹	active cases ²	Total population	No. of districts with 7-di > 50/100,000 pop.	Change to previous day for no. of cases currently in ICU	No. of vaccinations reported in last 24h
+210,673 (15,264,297)	-15,900 [ca. 3,444,200]	1,174.1 cases/100,000 pop.	±0 [411/411]	-87 [2,202]	1st vaccination: +8,947 2nd vaccination: +22,304 Booster vaccination: +72,073
Hospitalised ¹	Recovered ³	Hospitalised (all age groups)	No. of districts with 7-di > 500/100,000 pop.	% of COVID-19 occupancy in total number of operable beds ⁴	Total no. of people fully vaccinated against COVID-19 ^{5, 6, 7}
+2,039 (449,619)	+226,300 (ca. 11,696,600)	6.36 cases/100,000 pop.	-1 [408/411]	10.3 %	N1: 63,479,876 N2: 62,775,453 N3: 47,529,008
Deaths ¹		Hospitalised aged 60 years +	No. of districts with 7-di > 1000/100,000 pop	No. of new cases in ICU compared to the previous day	Share of population fully vaccinated against COVID-19
+267 (123,505)		13.45 cases/100,000 pop.	+3 [290/411]	+223	N1: 76.3 % ⁵ N2: 75.5 % ⁶ N3: 57.2 % ⁷

Numbers in () brackets show cumulative values, numbers in [] brackets show current values. Footnotes can be found in the Annex.

COVID-19 cases are notified to the local public health authorities in the respective districts, in accordance with the German Protection against Infection Act (IfSG). The data are further transmitted through the respective federal state health authority to the Robert Koch Institute (RKI). This situation report presents the uniformly recorded nationwide data on laboratory-confirmed COVID-19 cases transmitted to RKI.

– Changes since the last report are marked **blue** in the text –

Summary (as of 03/03/2022, 10:00 AM)

- Yesterday, **210,673** new laboratory-confirmed COVID-19 cases as well as **267** new deaths associated with COVID-19 were transmitted to the RKI in Germany. The national 7-day incidence is **1,174.1** cases per 100,000 population. The 7-day incidence in federal states lies between **1,678.5** cases per 100,000 population in **Saxony-Anhalt** and **483.4** per 100,000 population in **Hamburg**.
- Overall, **+2,039** new hospitalisations with COVID-19 were reported, the 7-day incidence of hospitalised cases is **6.36** per 100,000 population.
- On **02/03/2022** (12:15 AM), **2,289** COVID-19 patients were in intensive care units (ICU), **+3** cases compared to the day before. The COVID-19 adult occupancy as a percentage of all operational adult intensive care beds is **10.3 %**.⁴
- Since 26/12/2020, **170,177,398** vaccine doses have been administered in Germany. Overall, **76.3 %** of the population in Germany have been vaccinated at least once.⁵ **75.5 %** have received a complete course of vaccination against COVID-19.⁶ **57.2 %** have received a booster vaccination.⁷

Epidemiological Situation in Germany (as of 03/03/2022, 0:00 AM)

Since January 2020, a total of **15,264,297 (+210,673)** laboratory-confirmed cases of COVID-19 have been reported to and validated by the RKI (Table

Table 1). The geographical distribution of cases of the last 7 days is shown in Figure 1. Please see the COVID-19 dashboard (<https://corona.rki.de/>) for information on the number of COVID-19 cases by county (local health authority).

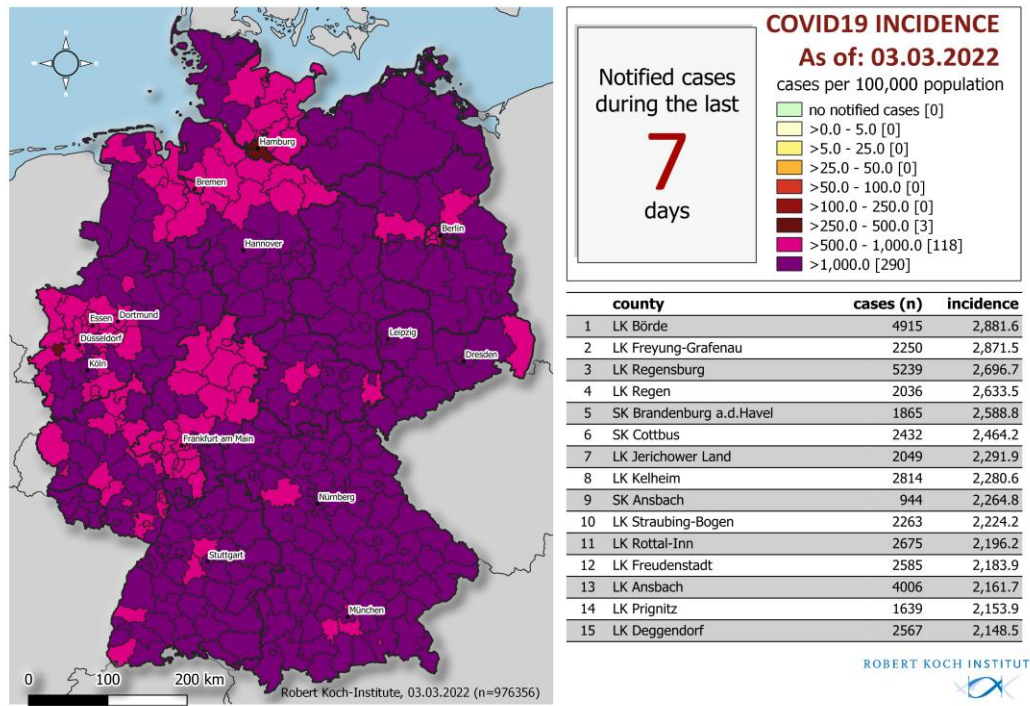


Figure 1: Number and cumulative incidence (per 100,000 population) of reported COVID-19 cases in Germany by county and federal state (n=976,356, 03/03/2022, 12:00 AM). Cases are usually reported according to the district from which they were transmitted. This usually corresponds to the place of residence. Place of residence and probable place of infection do not have to coincide.

Table 1: Number and cumulative incidence (per 100,000 population) of laboratory-confirmed COVID-19 cases, hospitalizations and deaths for each federal state electronically reported to RKI, Germany (03/03/2022, 12:00 AM). The number of new cases includes cases newly notified to the local public health authority, but also on prior days.

Federal State	Cumulative cases			Last 7 days			Cumulative deaths	
	Number of cases	Number of new cases	Cases/100,000 pop.	Cases	Cases/100,000 pop.	Hospitalisations/100,000 pop.	Number of deaths	Deaths/100,000 pop.
Baden-Wuerttemberg	2,166,572	30,877	19,513	150,752	1,357.8	6.98	14,334	129
Bavaria	2,865,297	43,123	21,806	205,918	1,567.1	5.50	21,455	163
Berlin	754,778	7,125	20,599	33,914	925.6	3.17	4,263	116
Brandenburg	532,919	7,699	21,055	36,032	1,423.6	7.63	5,204	206
Bremen	117,254	1,207	17,240	4,782	703.1	1.76	684	101
Hamburg	353,228	2,311	19,068	8,954	483.4	2.70	2,307	125
Hesse	1,090,187	10,765	17,323	55,675	884.7	6.31	9,237	147
Mecklenburg-Western Pomerania	252,313	6,147	15,664	26,198	1,626.4	17.82	1,779	110
Lower Saxony	1,088,101	20,111	13,595	88,982	1,111.8	4.75	7,519	94
North Rhine-Westphalia	3,137,750	37,175	17,504	172,695	963.4	6.32	22,410	125
Rhineland-Palatinate	598,023	8,745	14,592	38,723	944.8	7.08	5,030	123
Saarland	163,986	2,359	16,665	12,565	1,276.9	2.85	1,405	143
Saxony	961,609	14,026	23,703	49,905	1,230.1	6.11	14,354	354
Saxony-Anhalt	425,154	8,207	19,496	36,602	1,678.5	9.72	4,770	219
Schleswig-Holstein	334,403	5,651	11,488	27,396	941.2	6.11	2,130	73
Thuringia	422,723	5,145	19,938	27,263	1,285.8	12.40	6,624	312
Total	15,264,297	210,673	18,356	976,356	1,174.1	6.36	123,505	149

Quality checks and data cleaning by the local health departments and federal state health authorities can lead to corrections to cases previously transmitted (e. g. detection of duplicate reports). This can occasionally lead to negative values for the number of new cases.

Figure 2 shows the course of the COVID-19 cases per 100,000 population transmitted to the RKI on the last 7 days in each of the federal states and in all of Germany. The values for the 7-day incidence in the federal states range from 1,678.5 per 100,000 population in Saxony-Anhalt to 483.4 per 100,000 population in Hamburg.

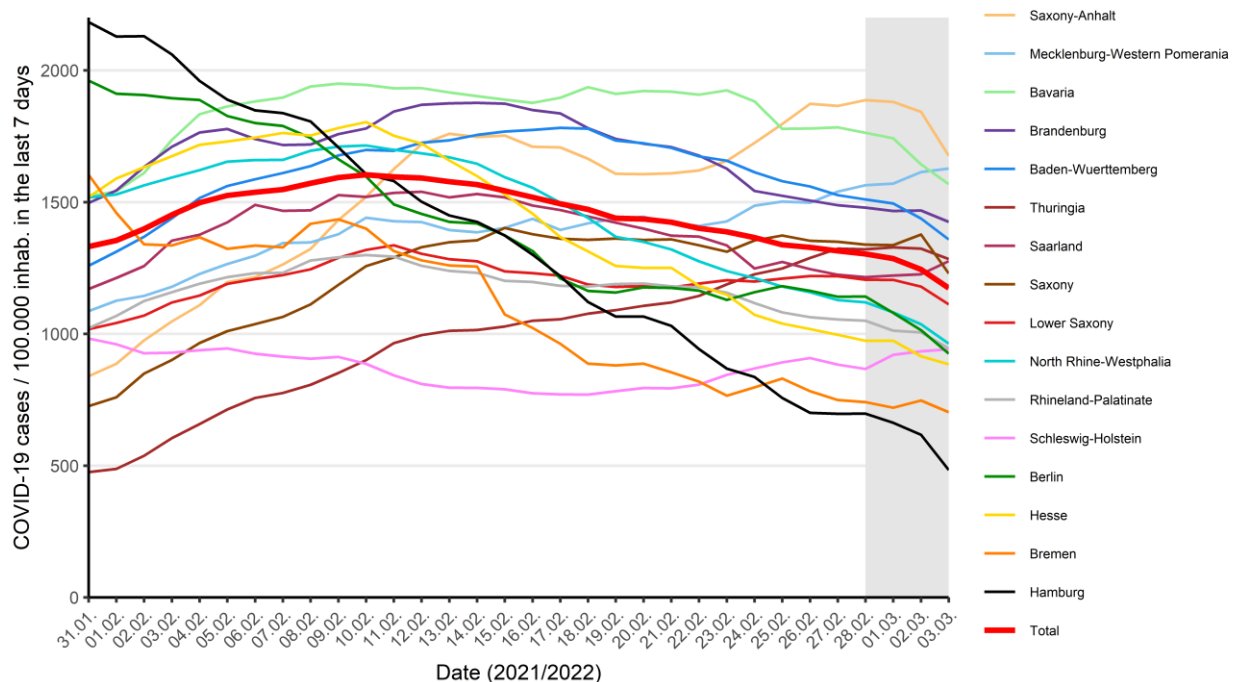


Figure 2: COVID-19 cases/100,000 inhabitants during 7 days in Germany by federal state and reporting date in the health offices (03/03/2022, 0:00 AM). The grey area delineates a range of dates with yet incomplete data, where changes in incidence are likely to occur.

Estimation of the reproduction number (R), taking into account the reporting delay (Nowcasting)

Figure 3 shows the course of estimated 7-day R-value.

7-day R-value
0.87
(95%-prediction interval: 0.82 – 0.93)

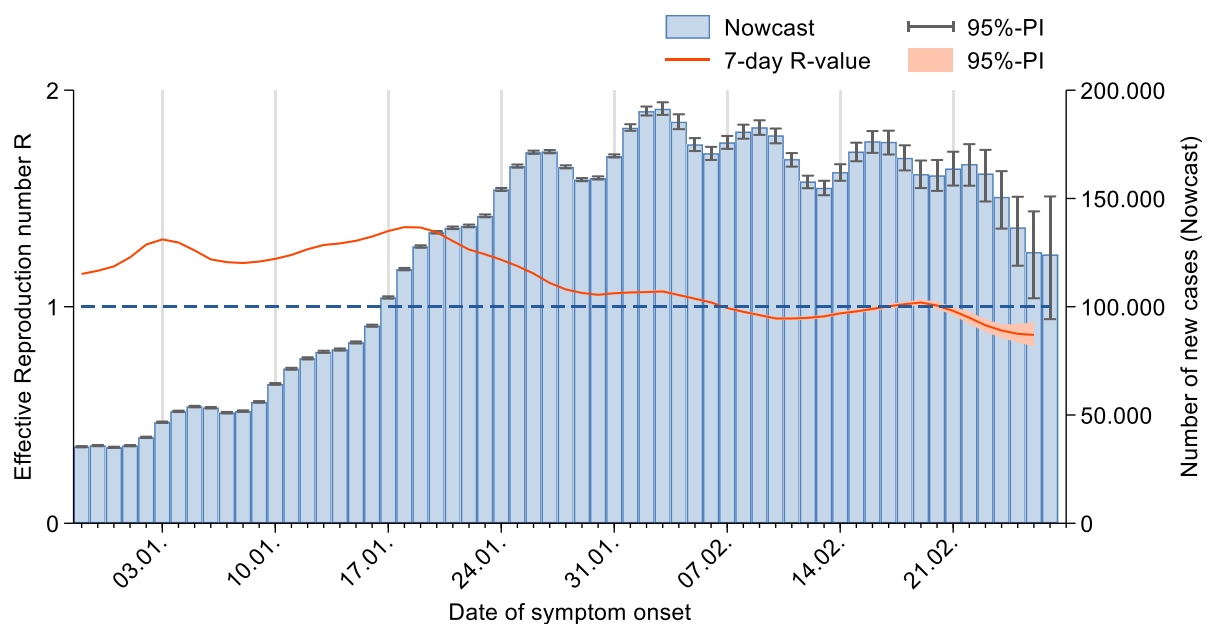


Figure 3: Estimated 7-day R-value (in orange) over the last 60 days, against the background of estimated number of COVID-19 cases according to illness onset (as of 03/03/2022, 12 AM, taking into account cases up to 27/02/2022).

The R-value is statistically significantly below 1, indicating a falling trend in case numbers.

Sample calculations as well as an excel sheet presenting the daily updated R-value can be retrieved under www.rki.de/covid-19-nowcasting. A detailed description of the methodology is available at https://www.rki.de/DE/Content/Infekt/EpidBull/Archiv/2020/17/Art_02.html (Epid. Bull. 17 | 2020 from 23/04/2020).

Annex:

Notes on data collection and evaluation

The data presented in this situation report represent a temporal snapshot. Information on individual cases can be obtained and added by the health authorities in the course of the disease. It is not possible to obtain complete data for all variables.

If necessary, the local public health authorities collect additional information, evaluate reported cases and initiate the necessary infection control measures. In accordance with the Infection Protection Act, the data are transmitted electronically by the local public health authorities to the federal state health authority and from there to the RKI on the next working day at the latest. The data is updated at the RKI daily at 0:00 AM.

Data entry and data transmission can lead to a time lag from the time the case is reported to the local public health authorities until publication by the RKI, so case numbers may deviate from those from other sources.

For the calculation of the incidences, the data of the population statistics of the Federal Statistical Office from 31.12.2020 are used. The calculation of the 7-day incidence is based on the reporting date, i.e. the date on which the local public health authorities became aware of the case and recorded it electronically. For the 7-day incidence, the cases reported on the last 7 days are counted.

On the other hand, the number of cases since the previous day, as shown in the situation report and dashboard, is tied to the date when the case is first published in the RKI's reporting. Thus, due to transmission delays, it may occur that cases with a reporting date more than 7 days ago are still included in the situation report. At the same time, the number of cases since the previous day also may contain cases that were subsequently deleted in data quality checks. Thus, the 7-day incidence cannot be readily calculated from these single-day incidences.

Notes

- 1 The number of cases since the previous day refers to the date of receipt at the RKI; due to the delay in transmission, cases from previous days may be included.
- 2 The number of active cases results from the number of transmitted cases minus the deaths and the estimated number of recovered cases.
- 3 The algorithm for estimating the number of people who have recovered assumes an average duration of illness from onset or hospitalization date on. The true length of symptomatic illness and/or sequelae are usually not available in the reporting system.
- 4 Proportion of COVID-19 occupancy by adults out of all available adult intensive care beds.
- 5 The total number of persons vaccinated at least once results from the number of reports coded as first vaccination in the transmitted vaccination data.
- 6 According to specifications for vaccination data transmission, every second vaccination or first vaccination after recovery is to be transmitted with the code as a complete vaccination. A vaccination with the Janssen vaccine is coded and transmitted as a first vaccination, but is also counted as completed vaccination series.
- 7 The total number of persons with booster vaccination results from the number of reports coded as booster vaccination in the transmitted vaccination data.