

Mental health of population in a zone submitted to coastal erosion: the case of Cotonou in Benin

Florence de Longueville & Sabine Henry (UNamur, Belgium)

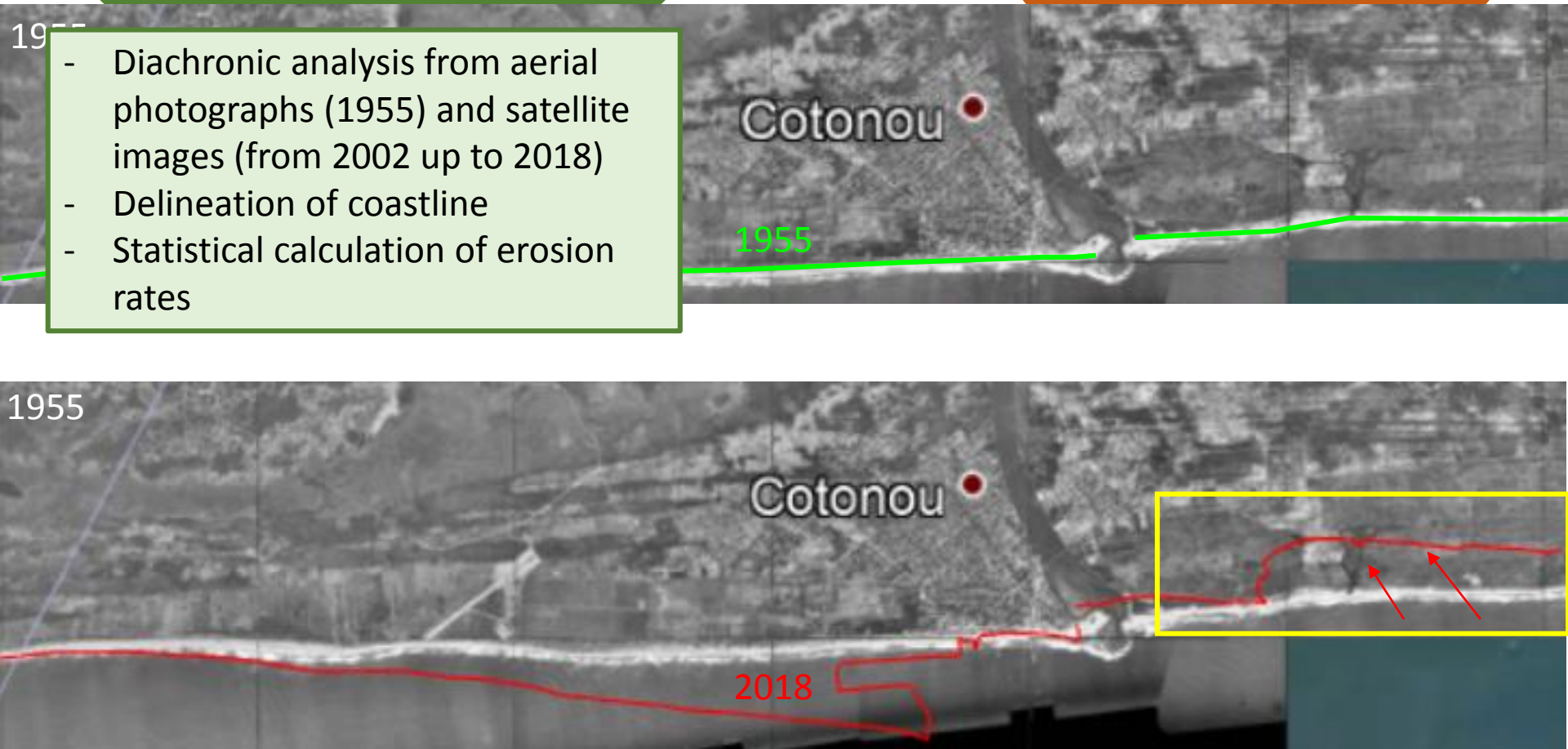
Liliane Assogba & Pierre Ozer (ULiège, Belgium)

Objective

Coastal erosion (‘natural’ stress)

- Diachronic analysis from aerial photographs (1955) and satellite images (from 2002 up to 2018)
- Delineation of coastline
- Statistical calculation of erosion rates

People and movements



Coastal erosion between 2002 and 2013

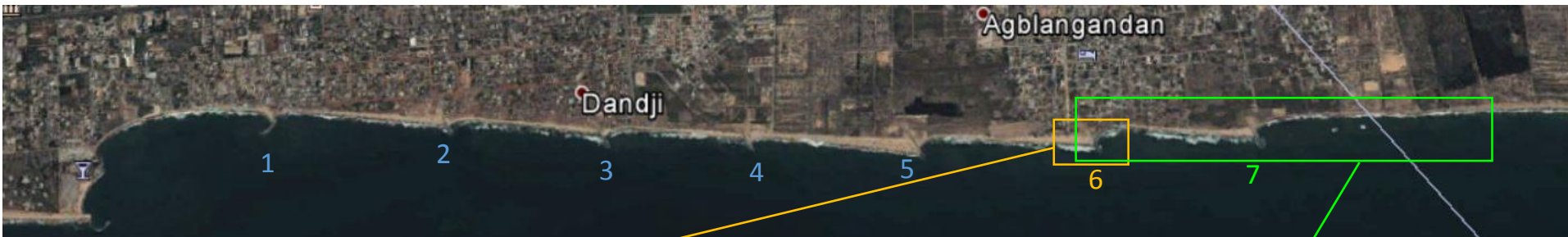
December 2002

February 2013



-> Erosion rate between 1960 and 2013: more than 10m/year

What happened in 2013 ?



Groyne 7

26/11/2013

05/05/2018

-> Protection of the coastal zone

Coastal erosion between 2002 and 2018

December 2002

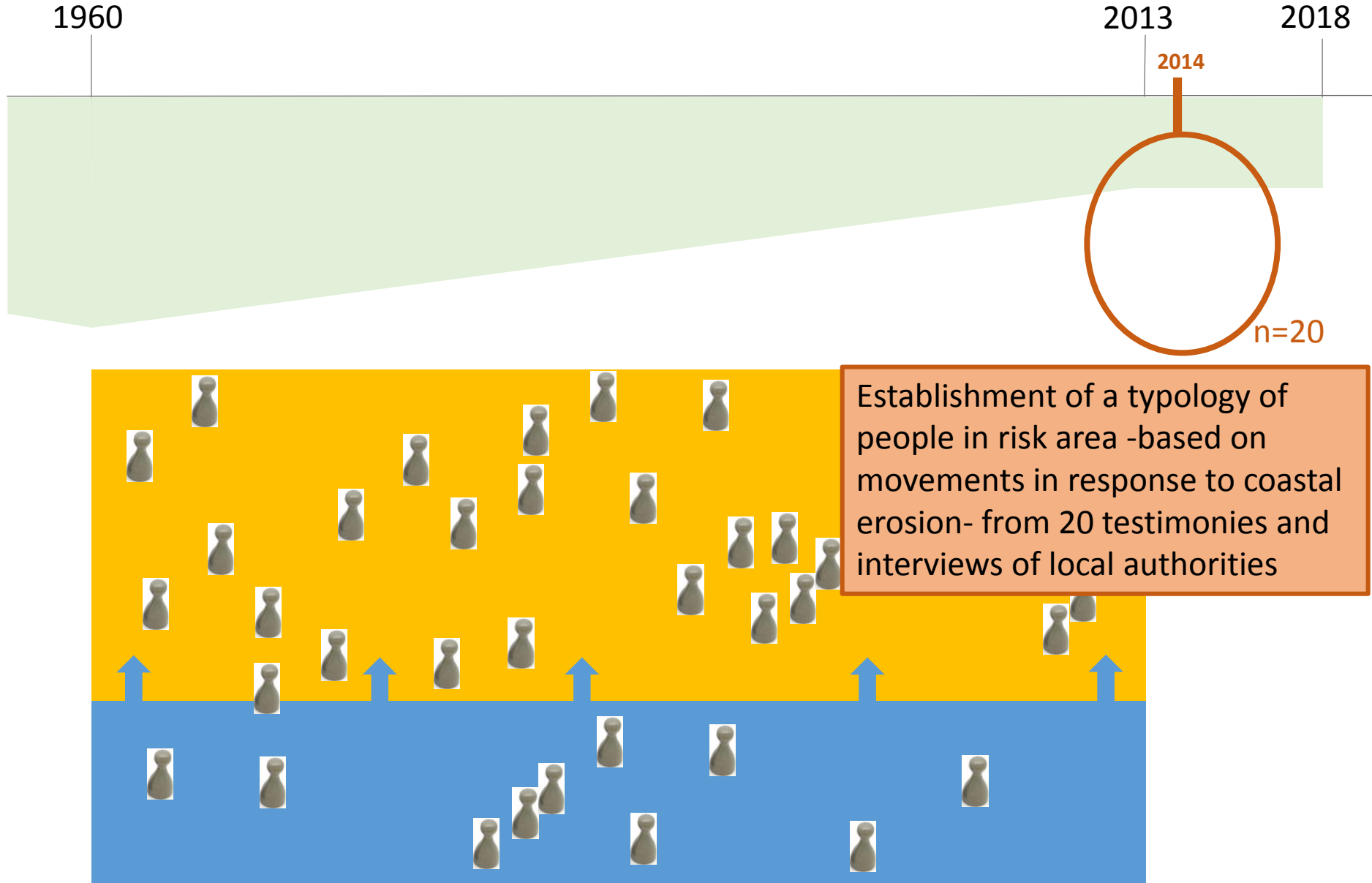
February 2013

November 2013

December 2017



-> Stability since the end of 2013



-> Who are these people and how do they move?

(Im)mobility of wealthy people



Outmigrants

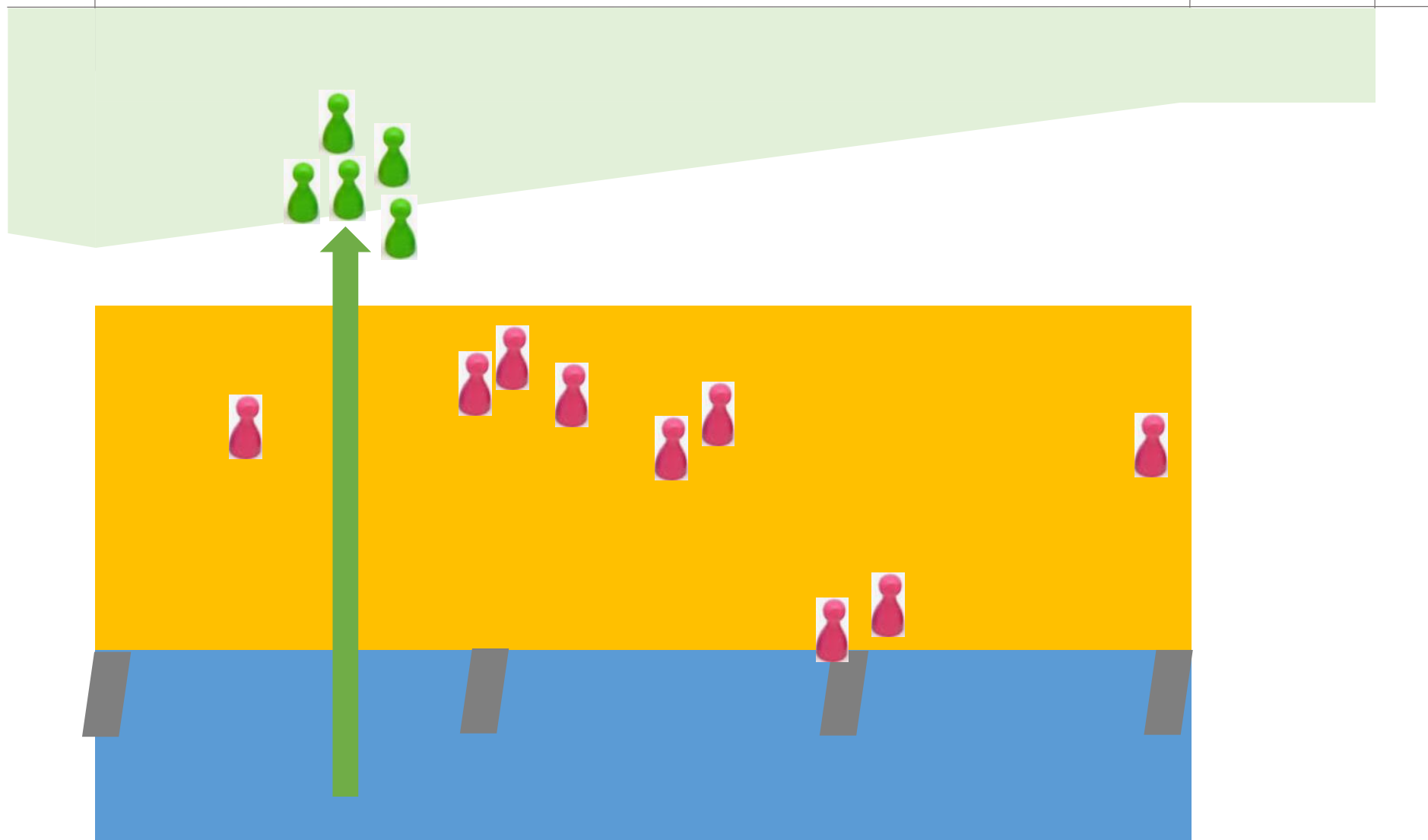


Voluntary non-migrants 1

1960

2013

2018

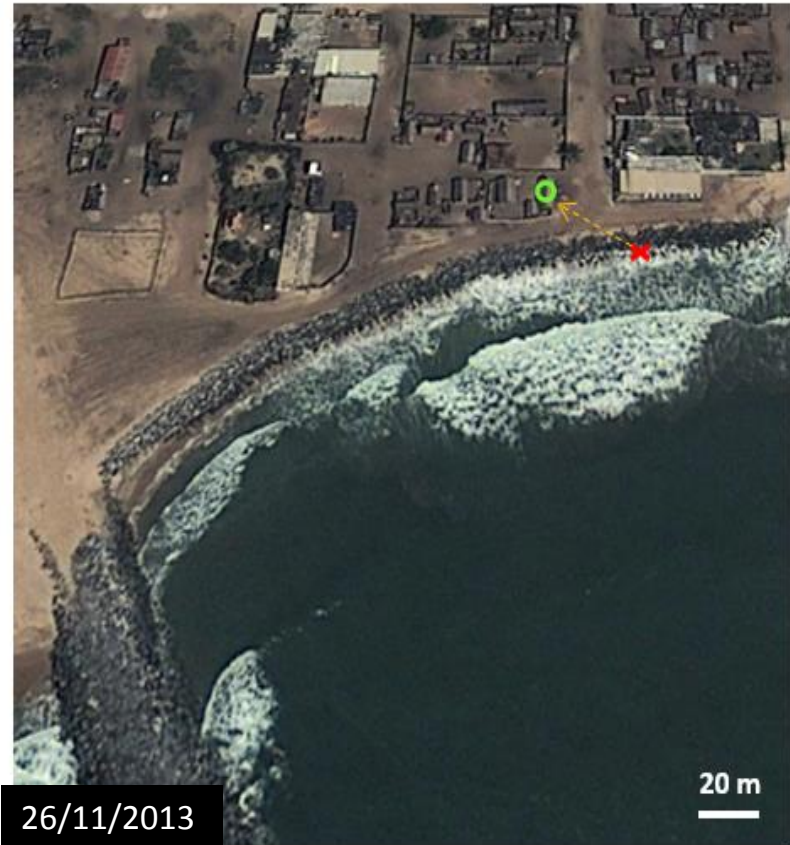


(Im)mobility of poor people

Successive very shorts movements



Voluntary non-migrants 2
(‘economic’ trapped population)
Sensitized by authorities

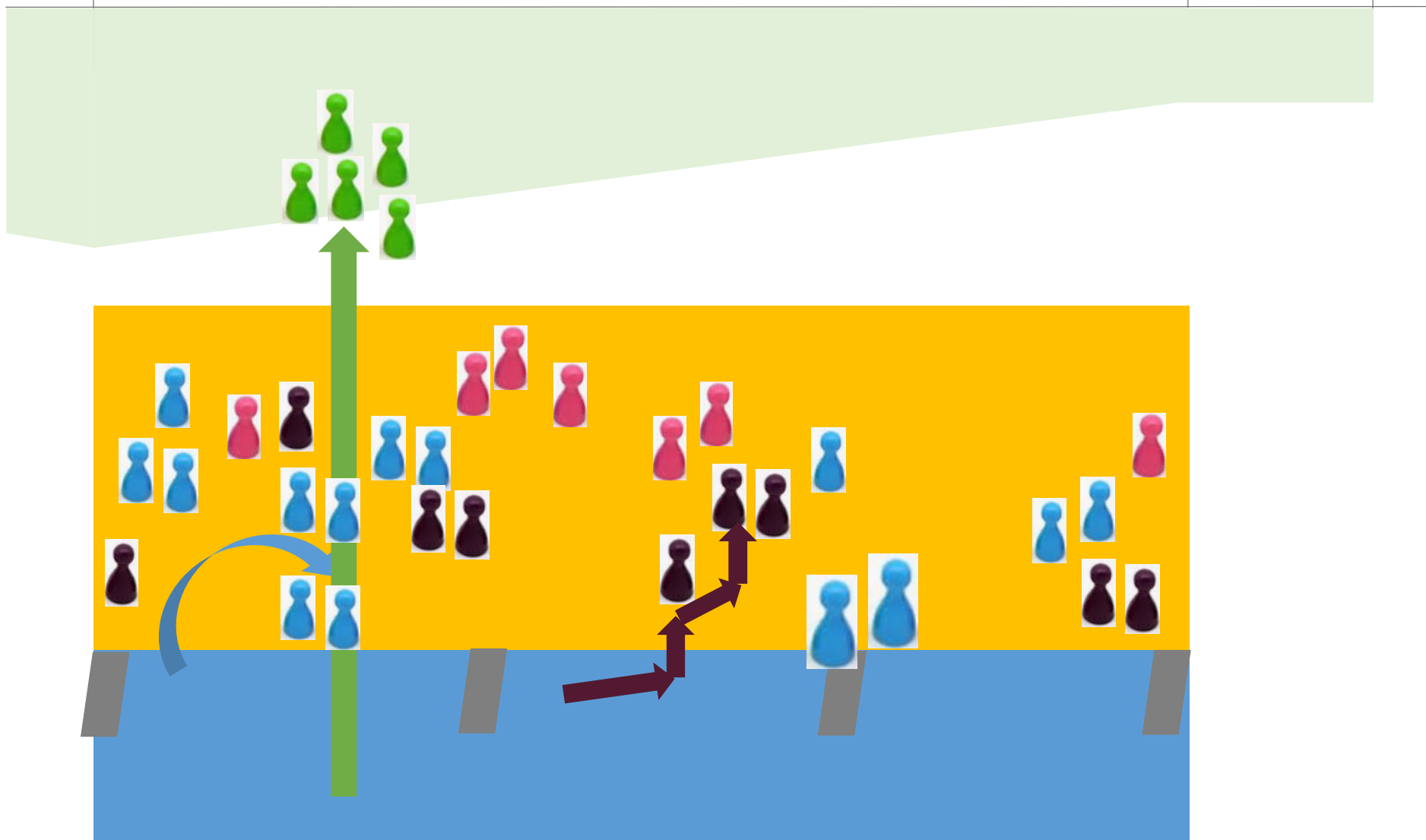


Involuntary non-migrants
(trapped population)
Disregarded by authorities

1960

2013

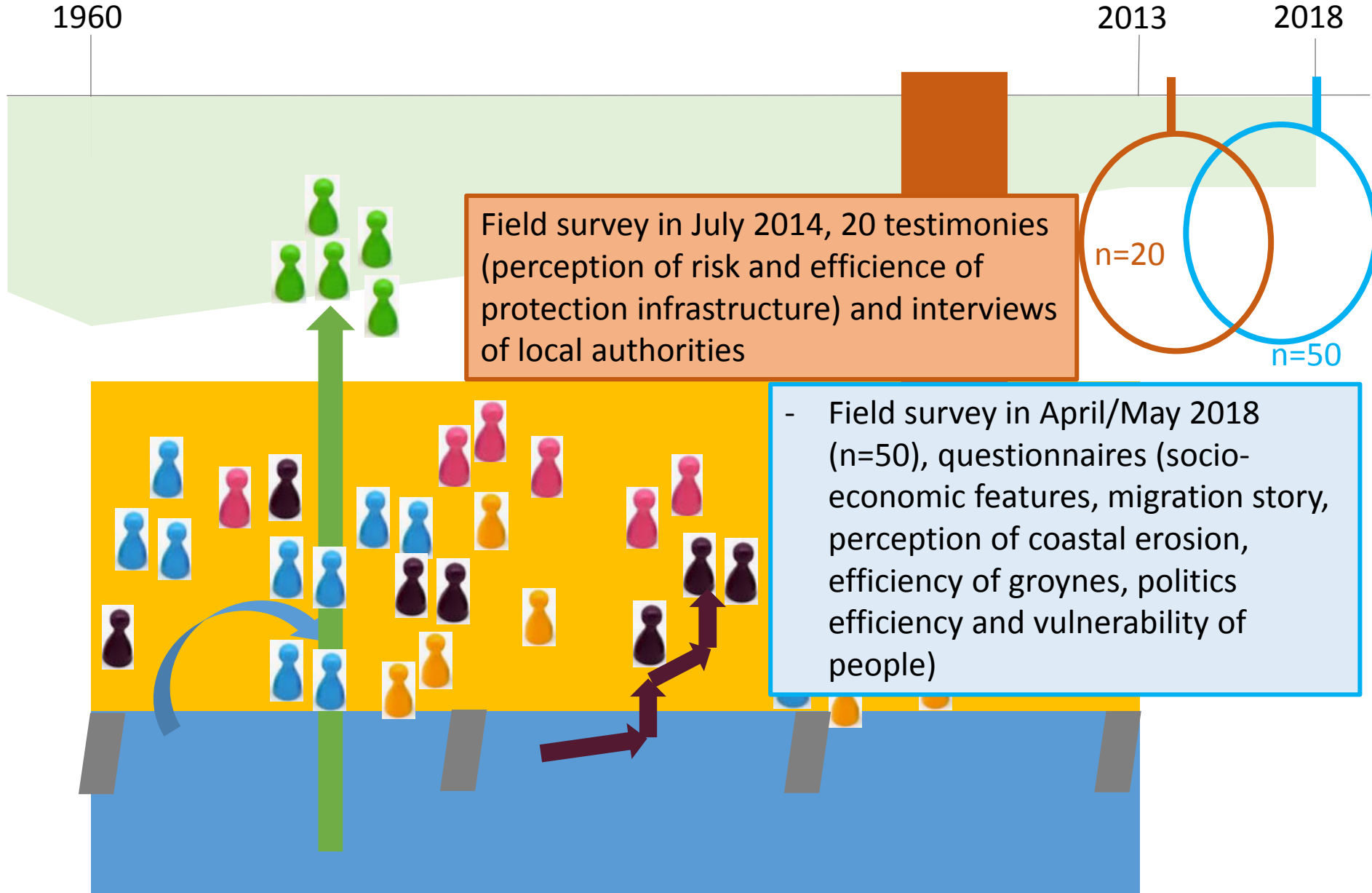
2018



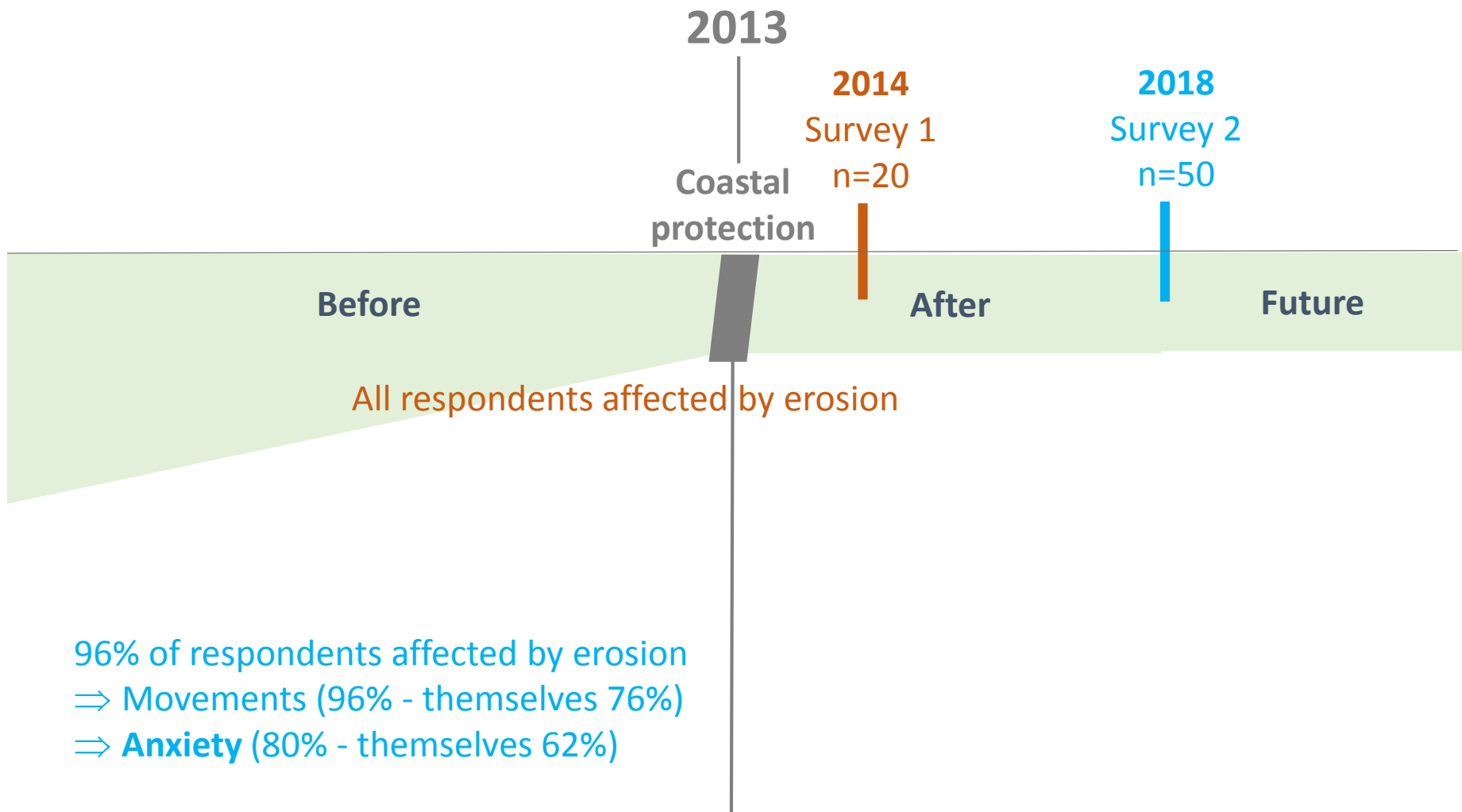
Dynamic of settlements



+ Immigrants



-> What about mental health concerns of these at-risk populations ?

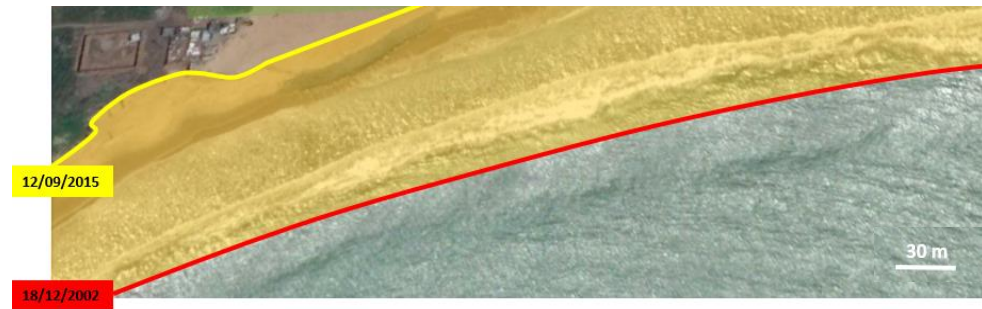
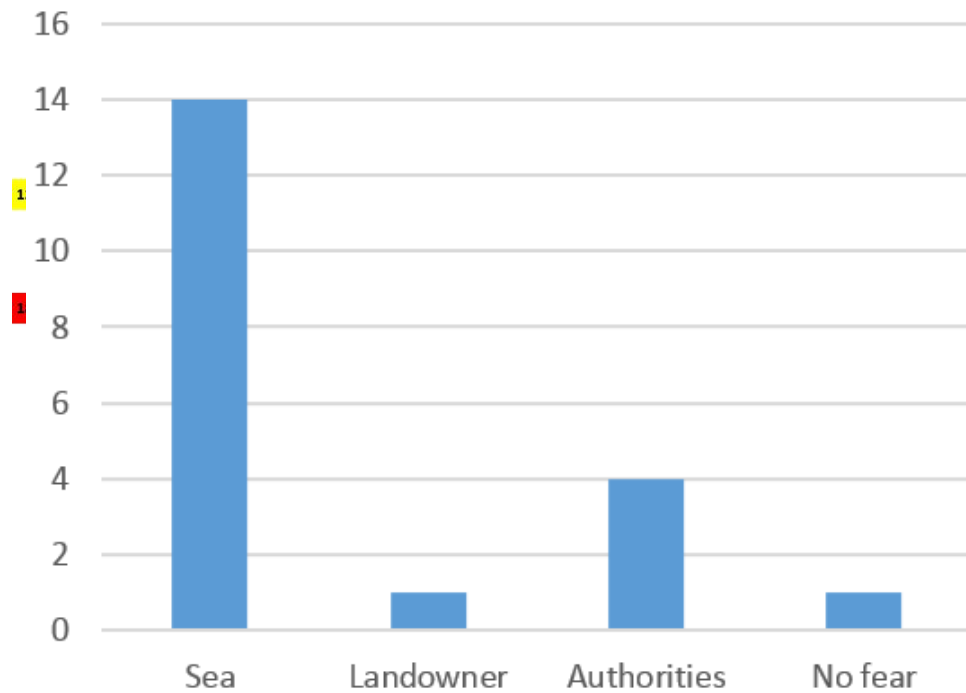





Before and after the storm of 30 May 2013



Fear to be outsd by (n=20)



Efficiency  **Efficiency**

Worsen 15%	Worsen 6%
No/Little 70%	No 8%
Yes 15%	Yes 86%

2013

2014

Survey 1

n=20

2018

Survey 2

n=50

Coastal
protection

Before

After

Future

All respondents affected by erosion

**Fear
sea
eviction**

Serenity
no 42%
little 50 %
yes 8%

**Want to
leave: 56%**

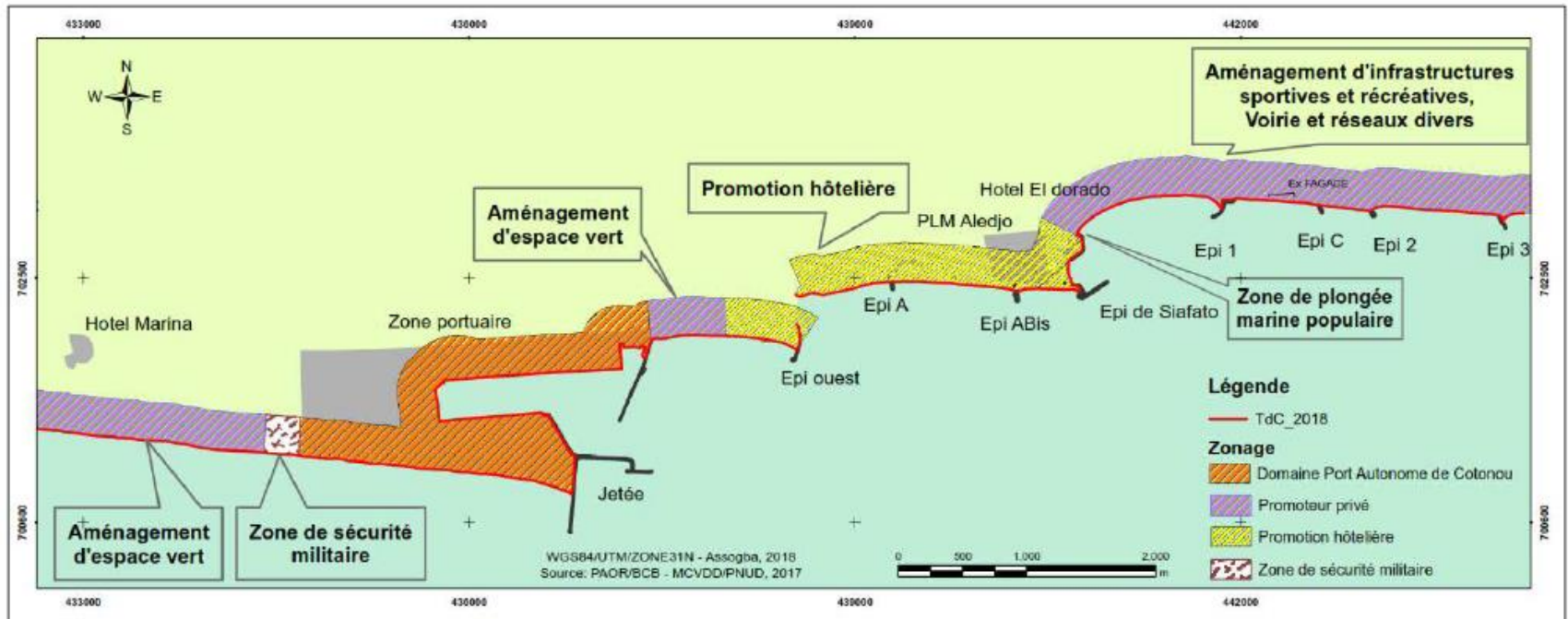
Fear of eviction: 38%

96% of respondents affected by erosion
⇒ Movements (96% - themselves 76%)
⇒ **Anxiety** (80% - themselves 62%)

 **Serenity: 90%**

In the next years...

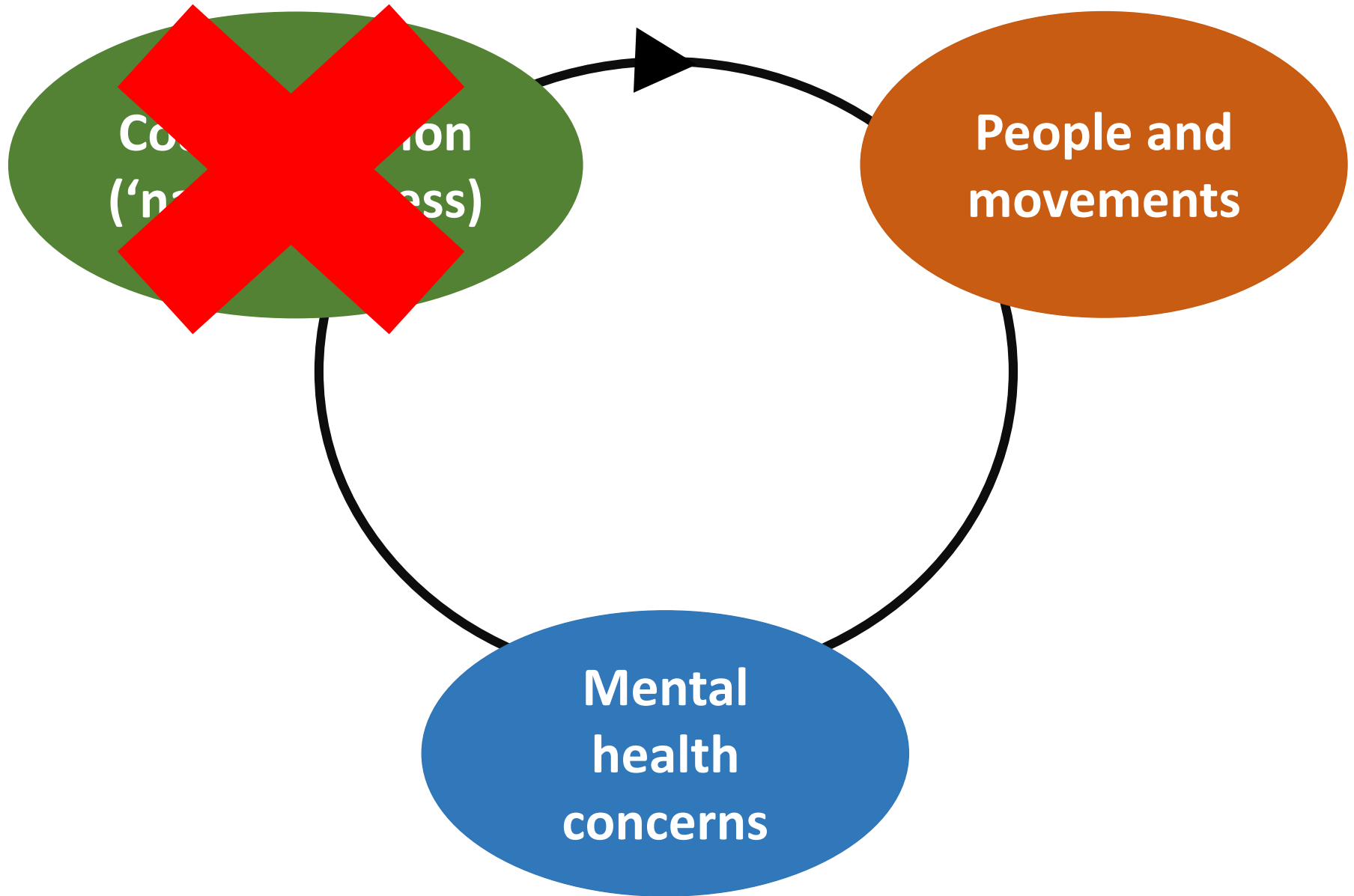
In response to stabilization of coastline, there are new projects of land planning



⇒ People who want to stay (fishermen) fear eviction

⇒ People who want to leave (precarious population) do not have alternative, but will have to leave by force

Conclusion



Conclusion

